

# Southeast Communities Rail Partnership Weekly Highlights

DATE 22<sup>nd</sup> May 2026



1066: Hastings to Tonbridge  
Kanna Ingleson, Line Officer  
[kanna@southeastcrp.org](mailto:kanna@southeastcrp.org)

- 1066 rail heritage is back on the agenda after a great meeting with John Allcorn in Tenterden. John is the son Arthur B Allcorn (1902-1963) who was the Stationmaster at Robertsbridge from 1945 till 1961. I am making posters with photos to highlight how different the job was in those days. The posters will be displayed at the station.
- Attended the Integrated Sustainable Travel Discussion Group. It was good to finally hear mention of public transport (un)affordability. Here is the full recording:
- Little Gate Farm now has approval to sell flowers outside St Leonards Warrior Square Station. They have grown the flowers themselves and will soon be starting on Fridays.
- Next week is a big one for us as Hastings Friary Gardeners once again plant up the station frontage and platforms with stock that they have grown from seed. Risk assessment is done.
- Rail to Ramble from Robertsbridge this Sunday at 9:30. All welcome.



# Arun Valley: Gatwick Airport to Bosham

Rowena Tyler, Line Officer  
[rowena@southeastcrp.org](mailto:rowena@southeastcrp.org)

- A catch-up meeting at Arundel station with station staff and volunteers. I took away several actions which will be followed up in the coming weeks. The circular bench in the wildflower garden (*see photo*) has been repainted by the local guides, with each of the four benches representing a season.
- I attended the GTR/CRP meeting at Monument, where I was pleased to hand out copies of the Annual Review, and receive positive feedback from everyone (*see photo*)
- Two meetings with WSCC officers, firstly, along with Lynda, we had a general planning meeting with Claire Clilverd, who sits on each of our line groups. Then all three of us visited the County Records office, to meet Jenny Mason, Senior Archivist and discuss ways to support each other in our respective roles.



Hounslow to Richmond  
Anna Stearman Line Officer  
[anna@southeastcrp.org](mailto:anna@southeastcrp.org)

- Meeting and lunch in Weymouth, with Paula Aldridge from SWR and fellow community rail line officers on SWR lines from other CRPs. Some great brainstorming and problem-solving on the train home, too.
- Site meeting at Hounslow station with LBR and Abundance London.
- Plenty of admin for St Margarets, Mortlake, Richmond and Isleworth.
- Inspired by street furniture and original planting ideas at Nantes station, France.



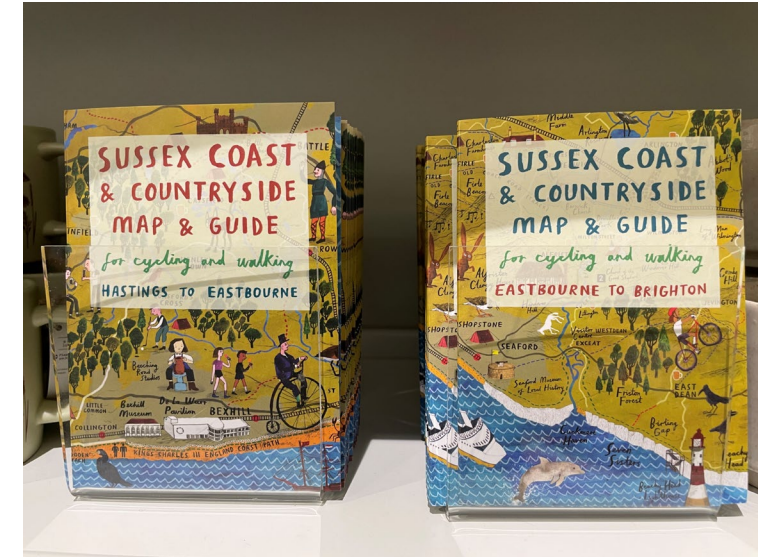
# Marshlink Hastings-Ashford International Paul Bromley Line Officer [paul@southeastcrp.org](mailto:paul@southeastcrp.org)

The Railway 200 blue plaques legacy continues.

I had a lovely email exchange with Peter Impett, the 4<sup>th</sup> cousin three times removed of railway engineer John Impett. He provided more information about his relative who featured as one of our Marshlink historical connections.

Attending the launch of the updated guides for active travel (train, bus, walk, wheel, cycle) along the Sussex Coast covering the Marshlink line and beyond.

The front of Hastings station looks lovely! The photo is a model of the station as it used to look from the Hastings model railway show at the weekend. I spoke to the show's organisers and our Community Rail-themed box file model railway may be invited to attend next year's show.



North Downs Gatwick- Redhill- Reading  
Line Officer:  
Sara Grisewood [sara@southeastcrp.org](mailto:sara@southeastcrp.org)

- We had a successful creative workshop at the lovely West End Community Centre in Aldershot with help from Friends of North Camp Station. The images will be used for an exhibition in June with ideas for our underpass mural.
- A lovely train trip on the NDL with Sam discussing comms and potential joint projects, and a visit to Farnborough North.
- The weather provided plenty of variety for our Walk/Draw with BVCT for the Rushmoor Big Green Fringe Festival: with a guided walk and lovely art session at Stationmasters House.
- Visited Sandy in Farnham with Mikey from Hampshire CRP.
- Finalised the Car Free Travel panel for Crowthorne Station.
- Photos: Walk at Grant's Meadow; art activity at West End Centre, results of Walk/Draw creative sessions. SCRP



Sussex Coast  
Line Hove to Littlehampton  
Lynda Spain Line Officer  
[lynda@southeastcrp.org](mailto:lynda@southeastcrp.org)

- I had a meeting with Adur & Worthing Council representatives at Durrington Station looking at possibilities for community action day activities
- Called into Hove Station for a sneak preview of the photography exhibition by Supajam – amazing shots and cannot wait for the launch event on 4<sup>th</sup> June
- Rowena and I had meetings in Chichester with WSCC officers, Claire Clilverd, Sussex Coast Vice Chair and Jenny Mason, Senior Archivist at the County Records office, to discuss ways to work together



Photos – planting at Durrington. Claire, Lynda and Rowena at West Sussex Records Office

# Sussex Downs Line Seaford to Brighton Michael Olden Line Officer [michael@southeastcrp.org](mailto:michael@southeastcrp.org)

---

- The never ending catch up with emails continues and sorting venues and a chair for our next steering group meeting.
- I attended the CRP meeting with GTR chaired by Patrick Ladbury with an interesting presentation from Tom Easdown, Head of Stations for Southern
- The gardens and planters at Lewes station are in full bloom, a tribute to our recently retired garden volunteers.
- Photo: SCRP Lewes Station Gardens





Uckfield - East Grinstead – Oxted & Ton -  
Reigate

Samantha Lear Line Officer  
[samantha@southeastcrp.org](mailto:samantha@southeastcrp.org)

- A truly inspiration visit to the North Downs Line looking at potential joint projects. With thanks to Sara and everyone at Reg's Garden.
- Lots of information sharing and project work during monthly catch up with Station Managers, GTR/SCRP and Line Chair meetings this week.
- Community Rail week Try the Train with Step by Step school has developed to include a workshop element on safety
- And a feedback session was held to review last weeks Try the Train with the Oaks college. This was hugely positive and inspiring – lots more of these now in the planning.



Windsor to Reading  
Sandy Mahon, Line Officer  
[sandy@southeastcrp.org](mailto:sandy@southeastcrp.org)

---

- Worked on film project proposal with the Young People's Engagement Officer at Achieving for Children and the Girl's Forum.
- Updating activity plan and forward plan.
- Met with colleague Sara and Mikey from Hampshire CRP to discuss joint projects at Reading Station including Summer Donation Drive in July.
- Initial filming at Egham Station for Instagram 'reel'.



# Go Learn Education

## Cath Reed Education Officer

[cathreed@southeastcrp.org](mailto:cathreed@southeastcrp.org)

- Ran 2 planning a Journey workshops with Year 6 pupils from Our Lady Queen of Heaven Primary School in Crawley (59 pupils)
- Ran 2 stations visits taking Year 6 pupils from Our Lady Queen of Heaven Primary School in Crawley to Horsham station where we did a station tour with different activities ( 59 pupils)
- Ran a TwC workshop with students at Brighton Forward in Worthing Planning a Journey to Horsham. ( 8 students)
- Ran a TwC trip to London Victoria where we then travelled on bus to Trafalgar Square and underground from Westminster to Victoria. For some of the students this was their first trip up to London. ( 6 students)



# Go Train GWR Education Maddy Mills Education Officer [maddy@southeastcrp.org](mailto:maddy@southeastcrp.org)

Tuesday

- Ran a Try a Train trip for East Surrey College. Travelled from Redhill to Reading for a tour of Reading station. 6 x young people.
- Ran a Try a Train workshop at Henry Tynedale School, Farnborough North. I had hoped to take them on a trip to Guildford, but the trains were delayed! Managed to bump into fellow colleagues – see photos!



- Ran a Travelling with Confidence (TwC) trip for Halow AG to Reading Bus Depot with travel from Guildford. We went through the bus wash! 8 x young people. Managed to bump into Sara again, twice today – see more photos! Can you see Sara sat on the train?!
- Delivered a TwC trip for Halow BW trip to the Isle of Wight using trains and ferries. 9 x young people travelled from Woking.

Wednesday



Marketing and Communications  
Samantha Lear Comms Officer  
samantha@southeastcrp.org

- Plans for our Film launch continued this week, please reply to the invitations!
- Annual Review distribution has continued
- Upcoming Community Rail week social media timetable completed (w/c 1<sup>st</sup> June)  
#CommunityRailWeek and #JourneysForAll



# SCRP CIC News

## Fiona Morton CEO, Trevor Field Finance Officer

- Proud to represent SCRP at the Sussex Women of the Year event . Many of the charities and groups we work with, were also guests. A great chance to catch up and plan more work together.
- Litter at unmanned stations and measures to stop birds from pecking holes in bin bags has produced a lot of inquiries for all the team this week. Pictured is a possible anti bird/vermin solution in use at Newbury station that could be rolled out across the region.
- Work on KPIs, grant applications and salary scales
- Next week looking forward to meetings with DfT and planning projects with our award-winning partners.

