

Southeast Communities Rail Partnership Weekly Highlights

DATE 15th May 2026



- Attended the Hastings Area Bus Users Group (HABUG). This time it included a discussion about how we could do better to clearly communicate how people can get to attractive destinations by bus and rail. Printed materials are seen as an important part of achieving this.
- Matt Fraser and I met with Olivia Post from Battle Folk and Fable to discuss how best to resolve fire safety issues at the Station Masters House. The idea was to introduce Matt so that he could understand the concerns and help get the right people talking to one another. It was a productive discussion that clearly identified what needed to happen.



Arun Valley: Gatwick Airport to Bosham
Rowena Tyler, Line Officer
rowena@southeastcrp.org

- Catching up with admin and messages, after returning from annual leave. Lots of enquiries about noticeboards this week!
- Joined colleagues at Lewes office for a session on social media platforms, led by SCRCP comms officer, Sam Lear.
- Planning the next Arun Valley Line Group meeting, to be at Fishbourne Roman Palace.



Hounslow to Richmond
Anna Stearman Line Officer
anna@southeastcrp.org

- We got the go-ahead from SWR for art project at Richmond Station and research into Cyril Power has begun.
- A private tour of the fascinating Eel Pie Island Museum in Twickenham, founded by Michele Whitby. The photo shows art inspired by Muddy Waters.
- Meetings with colleagues at Hounslow and Richmond councils and Paula at SWR, working on ongoing projects.
- Tweaking of scans and painstaking colouring of Mortlake drawings with hours and hours of help from the brilliant designer Harnake Hunspal.
- Meeting with new volunteer, Rachel, at St Margarets Station, who has links to heritage projects and a lot of can-do.
- Social Media training with lovely Sam at Lewes.
- The famous Decibelles have agreed to perform at Richmond Station's 180th Birthday celebration in July.



Marshlink Hastings-Ashford International
Paul Bromley Line Officer
paul@southeastcrp.org

A trip to Bexhill this week to meet Diana Birch from the Footbridge Project. I have supplied some Days Out by Rail posters for displaying in the community noticeboard at one end of the footbridge. The posters link to the Discover the Lines section of our website to encourage more people to travel by train for leisure and visits to places on our routes.

I have been busy distributing copies of SCRP's Annual Review to bookcases and display areas on the Marshlink line. Also I submitted a story and photos about the Annual Review which was published in [Rye News](#).

Lots of useful advice and tips in CRN's webinar on "Posting with purpose" on social media.



Social Media Skill Share

Posting with purpose



What to expect today:

- Welcome & Icebreaker activity
- Breakout conversations
- Insights from across the network
- Space to reflect, discuss and ask questions

Featuring

- Erin Kelly, Community Rail Network
- Leonie Stebbing, Walk Wheel Cycle Trust
- Betsy Saunders, Devon & Cornwall Rail Partnership
- Helen Wright, High Peak & Hope Valley CRP



North Downs Gatwick- Redhill- Reading
Line Officer:
Sara Grisewood sara@southeastcrp.org

- Bee-friendly planters have been installed at North Camp Station and look wonderful! This is down to partnership and hard work by the volunteers at North Camp, led by Chris Smith and with support from GWR who have funded the planters. North Camp Station is on the way to becoming a real haven for wildlife and a beautiful station.

- I had a further meeting with Network Rail about the replacement for Jessies Seat Topiary at Chilworth Station.

- Car-free travel map leaflet for Crowthorne is finally being printed this week! The new panel with the map will also soon be installed at the station.

- At the weekend I am running a community engagement art workshop at the West End Centre in Aldershot to generate ideas for our underpass mural at North Camp Station.

- Photo of installation with team from Bee Friendly Trust at North Camp. Photos Chris Smith BVCT



Sussex Coast
Line Hove to Littlehampton
Lynda Spain Line Officer
lynda@southeastcrp.org

- Meeting with Jenny and Phil from Shoreham Society and Amanda from Transition Towns in Shoreham. Great plans for the coming year.
- A catch up with Electric Storm Youth in Lancing about their forthcoming projects
- The invitation to the launch of Supajam's Photography exhibition at Hove Station was sent out (see photo). 4th June at 11am, please feel free to come along
- Development of plans for Fishersgate Station. Our first ever station partner, Figment Arts, will be working on some community art for installation during the summer

A TRIBUTE TO THE HEART OF THE TRACKS



**SOUTHEAST COMMUNITIES RAIL PARTNERSHIP
PHOTOGRAPHIC EXHIBITION**

Featuring live music from Supajam students

Thursday 4 June

11.00am - 12.30pm

Hove Station, Goldstone Villas, BN3 3RU



GTR

SOUTHERN

200
Years of Train Travel
Since 1825



Sussex Downs Line Seaford to Brighton

Michael Olden Line Officer
michael@southeastcrp.org

- It's been a week of catching up with emails, pouring over Merlin maps and photographing worn out zebra crossings and taxi ranks at Lewes station!
- I did have productive meetings with Sara on the North Downs Line looking at joint projects for The Big Draw and with Lynda on the Sussex Coast Line to swap info on overlapping projects along the south coast.
- Watering Lewes station has become part of my weekly routine, but I am meeting with the Aldingbourne Trust tomorrow and volunteers will soon take on that responsibility.



Uckfield - East Grinstead – Oxted & Ton - Reigate

Samantha Lear Line Officer

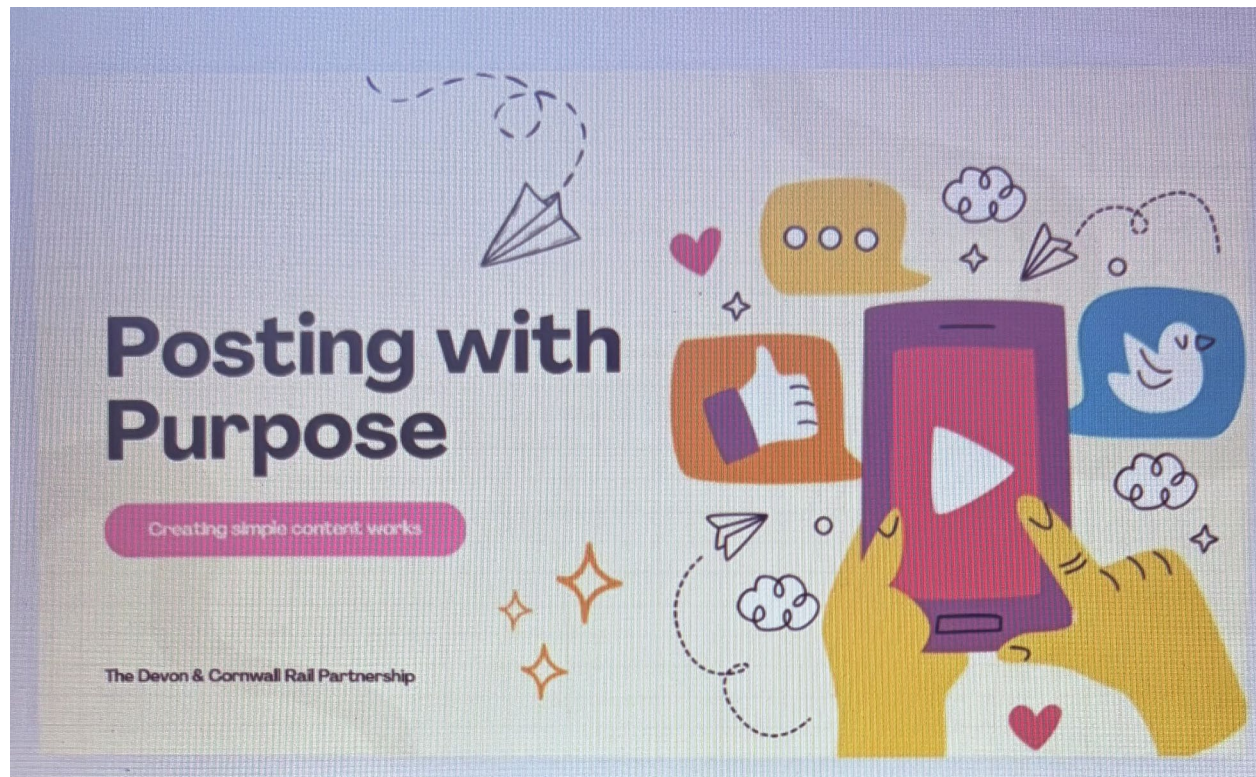
samantha@southeastcrp.org

- A fantastic Try the Train with added rail safety, station visit and RNO engagement sessions was held with The Oaks Specialist College this week.
- 8 young adults who are either due to leave college and seek employment or who will be having to find alternative travel to college in the near future travelled from Tonbridge to Coulsdon South via Redhill.
- The group were then hosted by Station Managers Dean Underwood and Mark Dunn in the community garden for an interactive safety session. An in – depth station tour showed them how and where they can get support whilst travelling.
- The group were introduced to RNOs who explained their role and demonstrated supporting passengers.
- There was also time for lunch in the managers office before an OBS Lorrae Smith escorted the group back to Tonbridge where a personalised onboard announcement made a wonderful end to the day!



Baby Blue Tits in the Community Garden at Coulsdon South

Windsor to Reading
Sandy Mahon, Line Officer
sandy@southeastcrp.org



- Attended Community Rail Network Social Media Skills Share. This session was for community rail network members and an opportunity to share skills, tips, and experiences around social media.
- 1-2-1 With Fiona.
- Meeting with colleague Sara, Network Rail and reading station about plans for White Ribbon day events.
- Obtaining quotes for artwork at Wokingham station.

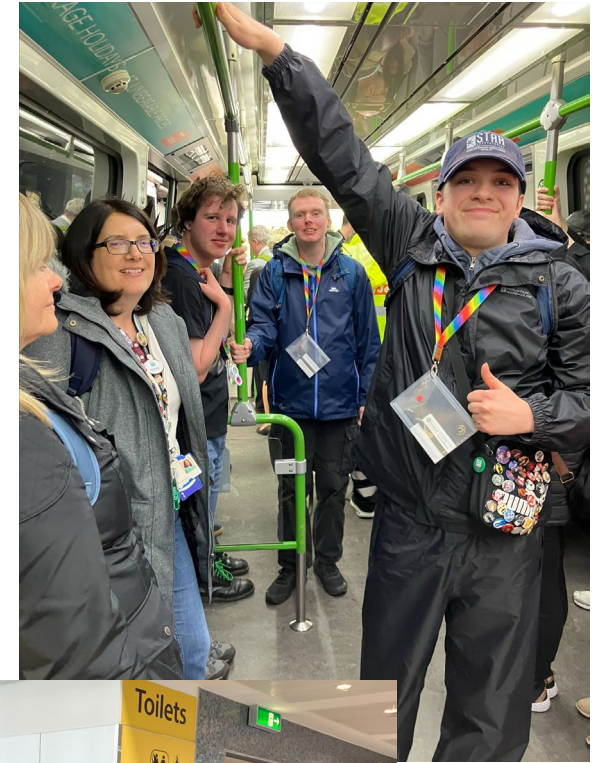
Go Learn Education
Cath Reed Education Officer
cathreed@southeastcrp.org

- Ran a workshop and Try a Train with 7 students from St Anthony's Special school. We travelled from Chichester to Bognor Regis and for some this was their first trip on a train.
- Ran a Planning a Journey workshop for TwC with 6 students from Brighton Forward in Shoreham. We are planning a trip up to London.
- Led a Planning a Journey workshop with 20 students from Oakgrove College then took them on a Try a Train from Goring to Bognor Regis.



Go Train GWR Education Maddy Mills Education Officer maddy@southeastcrp.org

- Delivered a Travelling with Confidence (TwC) trip for Surrey Choices in Ashford (Surrey). 8 x young people travelled from Ashford to Gatwick Airport for a tour by airport staff, including travelling on the monorail and sitting on the check in desks! See photos.
- Ran 2 x Try a Train workshops at Oak Tree Special School in Winnersh. 32 x Y9 students in total, all with additional needs.
- Delivered a TwC planning workshop for Halow AW in Woking. 8 x young people.



Marketing and Communications
Samantha Lear Comms Officer
samantha@southeastcrp.org

- Social Media training, for staff, was held at Lewes this week. The aim being to support the team in sharing more engaging content, especially during community rail week.
- A detailed Community Rail week plan was initiated and will be shared next week.





SCRP CIC News

Fiona Morton CEO, Trevor Field
Finance Officer

- A week of contrasts. Clearing out office and installing new shelves for equipment and an invitation to a very special lunch.
- Drafting new CRDF proposals and completing outstanding projects
- Refreshing policies in line with updated employment law and guidance
- Next week GWR & GTR catchup with fellow CRPs and a train wrap event at Brighton
- Photo :Trevor Field Finance Officer

ST SUSSEX WOMEN OF THE YEAR LUNCH

Friday 15th May 2026 at the
African Express Community Stadium, Falmer, Brighton, BN1 9BL
12 noon for 12.30pm Ends approximately 3.00pm

are delighted that you are able to attend the lunch

