

SOUTHEAST COMMUNITIES RAIL PARTNERSHIP



2025-26 Annual Review

WORKING IN PARTNERSHIP

connecting communities with places and opportunities



Foreword

Welcome to Southeast Communities Rail Partnership's (SCRCP) annual review, we are proud to share with you the excellent work of our line and education officers over the last 12 months. The projects have been carefully selected to demonstrate the breadth of the work undertaken by the SCRCP, illustrating the four pillars of community rail: providing a voice for communities, promoting sustainable and healthy travel, bringing communities together, and supporting social and economic development.

This year we had the chance to celebrate a once in a lifetime anniversary, Railway 200. Events on all 10 CRP lines celebrated this, including the Rail 200 Fair held in Lewes. You can read about more about Railway 200 in a dedicated feature within this review.

SCRCP has also achieved two re-accreditations this year, one from Community Rail Network (CRN) and another from Learning Outside the Classroom (LOtC). In the Re-accreditation process we were reported to have excellent governance and financial management. Our communication and delivery of priorities was deemed clearly defined and well aligned

with relevant external strategies and bodies. Achievements were made this year to improve consistency in case studies, as well as the publicity and recording of information. This enabled us to produce more targeted KPI's and better demonstrate our added social value. When assessing the work of our education team CRN noted the delivery of three major projects; Go Learn, Go Train and Travel with Confidence (Motability / CRN).

They also highlighted that we have been awarded the LOtC quality mark which provides schools with the confidence to use the education programmes.

Continuing a year of celebrations, we were delighted to see one of our founding directors on the King's New Years Honours List. Congratulations to TIM Sparrow for his MBE, gained in recognition of his work over the past 20 years.

We are also happy to congratulate our partners, the Friends of Bishopstone Station, on receiving the Kings Awards for Voluntary Services, the highest award for voluntary groups in the country.

Through our Environmental Policy we have worked to manage our own environmental impacts with efforts

to improve across all our activities. As well as common practices such as recycling, using public transport and reducing the use of printed materials, we have encouraged the reuse of materials and made efforts to stop using single use plastics across all our activities.

Additionally, through our work with Network Rail and Broadwater Downs we have protected a strategically important part of the railway for the future. As an organization we believe in nature for all and are committed to our ongoing efforts to help nature thrive.

We had a bumper year of projects shortlisted in this year's Community Rail Awards see page 32 for details.

In a year full of celebrations, the SCRCP has also continued to deliver many successful projects. We have sustained 10 Line Groups and increased our education projects to three programmes. We demonstrated the value of our community rail activities, and secured additional funding by using our KPI's, and having shown £678,678 in social value.

We are grateful to our partners for putting into words, throughout this report, what they believe is the value of our work.

Tim Barkley
SCRCP board chair



Bob Lanzer
Stakeholder Advisory Board chair



Looking ahead we are keen to welcome new partners and ways of working, as we align to ongoing industry changes including Great British Railways, whilst keeping communities at the heart of what we do.

As always we are deeply aware that none of this work could happen without our community, volunteers, partners, stakeholders and rail industry partners. Additionally, we are grateful to our steering groups and chairs and vice chairs for their time and dedication. On behalf of the SCRCP we thank everyone for all you do, we couldn't achieve anything without you!

Cover image: Launch event for new artwork by Sixth Form College Farnborough students at Farnborough North Station attended by staff and students, Deputy Mayor for Rushmoor, Cllr Julie Hall Rushmoor Councillor, and representatives from Community Rail Network, SCRCP and Farnborough Street Residents Association. ©SCRCP

↓ *Members of SCRCP Team December 2025.*



THE YEAR IN NUMBERS

Our work

3

Education
Projects

118

Partners

148

Other
organisations

5

Train
Operators

10

Community
Rail Lines

130

Stations

Our Volunteers

giving



34,804

Volunteer hours

worth



£679k

In social value

Our Fundraising



£124k

Grants to station partners
and SCRP-wide projects



£33k

Donations to station partners
and SCRP-wide projects

Our Publicity



1,134

Social media followers
across five channels



26,428

Website views



79

Website stories



20

Case Studies



15,000

Website visitors



48

Newsletters

Kanna Ingleson
Line officer
kanna@southeastcrp.org
07944 326430



'1066' Line (Hastings to Tonbridge)

southeastcrp.org/line/hastings-to-tonbridge-line

Enterprise, Health and Heritage

The once derelict Station Master's House at Battle, now home to Folk and Fable has been restored to its place at the heart of the community. Tostig, a new welcoming coffee shop, on the ground floor is run by 18-year-old Bobby Robertson. It's a tangible example of our commitment to strengthening the local economy wherever possible.

In partnership with One You and Sussex Outreach Service, fully booked public health checks were hosted at Battle, Etchingam and Robertsbridge stations. Each was preceded by a multi-agency Health and Wellbeing drop-in, creating a welcoming space for conversation, guidance and practical support.

↓ *One You and Sussex Outreach Service providing health checks.*



This has shown how stations can connect rural communities with advice and preventative care.

A collaboration with Tunbridge Wells Ramblers culminated in a glorious Sunday walk between Frant and Wadhurst. The aim was to encourage people to use the train to explore new landscapes.

In celebration of the rich heritage of the 1066 Line, SCRPs were pleased to showcase Explore The Arch's Platform Panel Project, an initiative shining a light on St Leonards-on-Sea's railway history, particularly the workers who built the line and kept the station running. Explore The Arch's early career team is a youth-led programme supporting young people to research and share local heritage.

↓ *Explore The Arch's Platform Panel Project, St Leonards-on-Sea.*



Blooming Platforms

Volunteers from Transition Town Hastings have spent the past decade transforming St Leonards Warrior Square Station into a living landscape of fruit trees, herbs and wildflowers designed to increase biodiversity and reconnect people with nature.

The Crowhurst Environmental Group curate a year-round station planting scheme that prioritises diversity, colour and fragrance, creating a sensory, wildlife-friendly environment.

Earlier this year, Hastings Friary Gardeners planted up containers at Robertsbridge Station with stock they had raised from seed. Sponsored by Robertsbridge and Salehurst Parish Council, this work earned a runner-up award in the South Eastern Railway in Bloom 'Best South Station' competition.

Planters at Tunbridge Wells Station, provided by South Eastern Railway, add a wonderful splash of colour thanks to volunteers Debbie and Charlie from the station team.



*Above: Friary Gardeners volunteers on the train to Robertsbridge for annual trip
Left: Friary Gardeners with their planters on Robertsbridge station platform.*

More details: southeastcrp.org/case-studies/friary-gardeners-annual-visit-to-robertsbridge/



← *One You and Sussex Outreach Service Health and Wellbeing drop-in sessions.*



Arun Valley Line (Gatwick Airport to Bosham)

southeastcrp.org/line/arun-valley-line

At Arundel station a celebration of Railway 200 and Green Team achievements was held with Councillor Carole Beaty, the Arun Line Valley Group and other guests. The Duke of Norfolk spoke about the biodiversity crisis and congratulated Greening Arundel on all that was being done to improve the situation locally. After dedicating the Railway 200 bench, he handed over to Mayor Carolyn Kenney who thanked all who had contributed to the station green spaces transformation. The Green Team invited everyone to visit “the stations within the station”.

A joint try-a-train trip which took in Horsham, Ford, Barnham and Littlehampton, with station and on-board staff for the Butterfly

project, a social enterprise and new station partner for Horsham allowed participants to enjoy a visit to Littlehampton Museum.

Our two Remembrance ceremonies at Horsham and Crawley saw large memorials, installed by GTR’s maintenance team unveiled by the Lord Lieutenant, Lady Emma Barnard. Veterans in attendance, included 101 year old George Durrant.

As part of the Bognor Regis Town Christmas lights switch on, a piano was temporarily situated on the concourse, with a programme of live music leading up to and just after the big lights switch on. This was a new initiative between Southern Railway, the SCRCP and the Track at Bognor Station.



↑ The Duke of Norfolk and Arundel Mayor meeting volunteers and partners at Arundel station, during the Great Big Green Week.



↑ Unveiling of the plaques designed for the Armed Forces & Veterans Breakfast Clubs (AFVBC) one at Horsham by Lady Emma Barnard, Their Majesties’ Lord Lieutenant of West Sussex.



↑ Butterfly project Try the Train at Horsham 2025.

CASE STUDY

Operation Parkside, Collaborative Safeguarding Assessment”

Operation Parkside launched in 2024 as a multi-agency response to incidents of youth disorder on the West Coastway line. The project was borne out of a shared ambition to deter antisocial behaviour while reclaiming stations as safe, welcoming, and community focused spaces. A strategic partnership with SCRCP has been central to this work, enabling proactive and positive engagement with the rail sector, passengers, local businesses and communities. We have delivered a range of initiatives across West Sussex including

station beautification projects, station adoption by a local youth organisation, a community music event and the joint Your Community Cares knitted hearts campaign.

Claire Clilverd, Contextual Safeguarding Officer, WSSC says:

“Working closely with SCRCP and its line officers over the past two years has been a genuinely positive experience. Through this collaboration, we have been able to deliver meaningful rail-based projects and build strong partnerships across the sector that are making a real difference to local communities”



Operation Parkside Assessment day begins at Horsham Railway Station, May 2025.



Taking part in the ‘Your Community Cares’ local initiative for White Ribbon Day, November 2025.

More details: southeastcrp.org/case-studies/operation-parkside-collaborative-safeguarding-assessment/



Hounslow to Richmond line

southeastcrp.org/line/hounslow-to-richmond-line

Barnes Station mural won the SWR Community Rail award for Best Community Project Involving Young People. Working with images from schools and community groups, Nightshift Studios artist, Christopher Anthony used the children's handprints on the wall as a final flourish.

"The completed mural has transformed the visual appearance of Barnes Station. It is a feature, a focal point and a talking point for travellers through the station".

- Emma Robinson, Barnes Town Centre Manager

St Margarets Station celebrated its birthday party with tea and cakes served by volunteers from the station adoption group.



↑ Kew Bridge BFC volunteers.



↑ Kew Bridge Bee Friendly Trust with plants.



↑ Barnes mural with chatting.



↑ Barnes mural. The opening.

The Mayor of Richmond, local councillors and station staff sang 'Happy Birthday' to passengers as they passed through the ticket hall.

In February, volunteers from Brentford Football Club, working with the Bee Friendly Trust, transformed Kew Bridge Station with pollinating plants on the bank and the platform.

"I'm really pleased to see this. It is a joy that the football ground and the railway are taking an interest in nature, especially the bees. It's nice to see it is not just about football!"

- Lynne Hoshemi, Brentford resident.



↑ St Margarets mayor cake and group.

CASE STUDY

Try the Train from Richmond and Hounslow for SEN pupils

Students with SEN from Richmond Adult and Community College and Great Oaks College at Hounslow had a day of fun with a double Try The Train expedition to visit the London Water and Steam Museum in Brentford.

"Learners enjoyed the visit to the Steam Museum and used research completed on the day to design their own garden inspired by the experience. They were engaged and enjoyed interacting with exhibits, especially the trip on the steam train. What an inspiring place!"

- Gareth Nash, SEND tutor, Richmond Adult Community College



Learners from Richmond and Hillcroft Adult and Community College enjoying a ride on the steam train as part of their Try the Train experience to London Water and Steam Museum.

More details: southeastcrp.org/case-studies/try-the-train-from-richmond-and-hounslow-for-sen-pupils/



Marshlink Line (Hastings to Ashford International)

southeastcrp.org/line/marshlink-line

It has been a year of admirable achievements and major milestones on the Marshlink line.

The community garden at Ore station was officially opened during Community Rail Week in May 2025. Among the dignitaries attending were the Lord-Lieutenant of East Sussex, the MP for Hastings and the town's mayor. Lead volunteer Suzanne Horgan said: "I'm really humbled. It's an idea that came and the community has all helped us to do this."

The transformation of the once derelict land into a community garden and the involvement of the community in developing the space have been widely – and rightly – praised.

Volunteers at Winchelsea produced an updated map and leaflet to promote businesses and attractions

within walking and cycling distance of the station.

The travel guide has been well received and estimated passenger numbers at Winchelsea have risen dramatically over the last few years to the point where they are now nearly double pre-Covid levels.

Paul Ramsey, landlord of The New Inn Winchelsea, who contributed to the costs of the leaflet, commented: "The trains bring in tourists and visitors to the town. It's better than using their cars so they can use the train and then just walk straight up to the town."

Banners with 'blue plaques' highlighting people with past connections to the line were on display at Ashford when South Eastern Railway hosted a depot open day in August 2025. South Eastern's

managing director Steve White called by to learn more about the project to mark 200 years of the modern railway.



↑ Launch of the updated map and leaflet at Winchelsea station, May 2025 © Paul Bromley for SCRP 2025. Left to right: Marshlink community rail partnership line chair Kevin Boorman, station volunteer Lyn Davidson, station volunteer John Davidson, station volunteer Judith Payne, New Inn landlord Paul Ramsey, lead volunteer John Spencer, St Thomas' primary school head Dale Saxby. © Paul Bromley for SCRP 2025



↑ 1066 line officer Kanna Ingleson, South Eastern Railway managing director Steve White and Marshlink line officer Paul Bromley, August 2025. ©SCRP 2025



← Ore station community garden opening, May 2025. Left to right: Hastings Mayor Cllr Becca Horn, Marshlink line chair Kevin Boorman, lead volunteer Suzanne Horgan, Marshlink line officer Paul Bromley, Lord-Lieutenant of East Sussex Andrew Blackman. ©SCRP 2025

CASE STUDY

Write on Track poetry competition and book giveaway

Rye Harbour Writers produced a book of all the station poems which have been displayed in Rye station waiting room over the last few years. A total of 200 copies were given away to passengers on Marshlink trains in one day as part of the Railway 200 celebrations.

The group also organised a Railway 200-related poetry competition called Write on Track with the winning poems displayed at Rye station. Funding for both projects came from a Railway 200 grant from Southern Railway.



Winners of the Write on Track poetry competition with their Railway 200-themed verses at Rye station. © Paul Bromley for SCRP 2026

More details: southeastcrp.org/case-studies/write-on-track-poetry-competition



North Downs Line (Gatwick Airport to Reading)

It has been an exciting year on the beautiful North Downs Line which travels through diverse habitats and landscapes. Many station groups and partnerships have all worked together to connect communities and their railway, to encourage sustainable travel, highlight nature and heritage, and continue to enhance our station spaces.

The Big Green Week was celebrated in Crowthorne with a visit to the largest land wind turbine at Reading by a group of residents keen to promote sustainable transport and walking routes around stations.

“Twenty sustainable adventurers took the train journey from Crowthorne to Green Park to see Berkshire’s only wind turbine”

Crowthorne Parish Council

↓ *One of the five panels at Farnborough North Station by Sixth Form Art students highlighting wildlife and railway history.*
©SCRCP



For the first time, we took part in the national Big Draw Festival at Reading and Guildford Stations. Artist-led workshops during school holidays, funded by GWR and CRN, attracted lots of participants and some fantastic drawings.

At Reading Station we worked with Reading Museums with references to the original architecture of the station. Participants tried out technical drawing, inspired by Elsie Winterton, the Victorian GWR engineer and draughtswoman.

“This made our visit memorable in an unexpected place. A lovely way to be curious and creative”

Guildford Big Draw Participant

GWR has funded a new artwork at Farnborough North Station which celebrates nature and heritage around the railways for Railway 200. Talented students at the Sixth Form College Farnborough, have used references to wildlife around the railway line and local railway history to create a piece of artwork which has many layers, textures and colours. The eye-catching designs span nearly the length of the platform.



↑ *Volunteers at Guildford Station helping with the Big Draw Festival 2025.* ©SCRCP



↑ *Fantastic drawing of a train by a young participant The Big Draw Festival 2025.* ©SCRCP



↑ *A group of walkers assemble at Dorking West Station for a Railway History walk led by Sara Grisewood as part of Dorking’s first Walking Festival.* ©SCRCP

CASE STUDY

Try a Train trip with the Nepalese Association and Surrey Hills National Landscape and Surrey Hills Society

In partnership with Surrey Hills National Landscape and the Surrey Hills Society, we wanted to provide the group with an opportunity to buy tickets, navigating apps and find their way around stations, use information points, and access the countryside.

We also wanted to highlight the launch of a new booklet promoting the rail to ramble routes between stations on the North Downs Line in the Surrey Hills.

The group travelled by train, tickets supplied by GWR, from Camberley to Ash Vale, and from North Camp Station to Chilworth.

From Chilworth the Gunpowder Mills, parts of the Rail to Ramble route, Chilworth Vineyard, the Downslink footpath network and St Martha’s Church were explored.

“Thank you for a really enjoyable day, it was a unique experience which helped improve knowledge, understanding and confidence.”



Try a Train trip to Chilworth Gunpowder Mills. ©SCRCP

More details: southeastcrp.org/case-studies/try-a-train-trip-with-the-nepalese-association-and-surrey-hills-national-landscape-and-surrey-hills-society/



Sussex Coast Line (Hove to Littlehampton)

Across the year, many community rail projects delivered positive social, educational and cultural impact including:

At Hove Station, students from Supajam College independently planned and delivered two busking events to raise money for charity. By managing logistics, engaging with passengers and station staff, and performing live music, students gained real-world skills while creating a joyful station environment. Passengers responded generously, with many commenting on how the music “lifted the mood” and encouraged charitable giving.

During BHASVIC College’s Skills Week, Sussex Coast and Sussex Downs Line Officers worked together along with students to



↑ Volunteers at Worthing on White Ribbon Day.



↑ Supajam College Students Busking at Hove.

explore attitudes to rail safety. Young people designed and delivered a peer-led survey, analysed the findings and presented recommendations to rail professionals. The project strengthened students’ understanding of railway operations while developing research, teamwork and presentation skills.

Following the success of *Beyond the Rails* podcast Series 1, a second series was developed with Arun District Council which showcased six Arun Valley stations. A free digital activity pack, funded by the Community Rail Network, extends

the project’s reach to schools, families and community groups, encouraging exploration, learning and sustainable travel.



↑ AVL Activity Pack Mock Up.



↑ SupaJam college busking at Hove station.

CASE STUDY

White Ribbon Day, Your Community Cares?

The “Your Community Cares” campaign, led by SCRP with West Sussex County Council, GTR, and the Library Service, promoted kindness and awareness around violence against women and girls. Timed with White Ribbon Day, it invited residents to knit white hearts, symbolising care and solidarity. Over 7,500 hearts were donated and distributed at 20 stations with support cards linking to help services. The initiative gently raised awareness while fostering community connection, engaging partners and passengers, sparking conversations and leaving a lasting message of compassion and support. Feedback was positive, highlighting hope, inclusivity, and meaningful impact.



Volunteers give out White Hearts at Lancing Station.

More details: southeastcrp.org/case-studies/your-community-cares-on-white-ribbon-day/

Sussex Downs Line (Seaford to Brighton)

It has been a busy year on the Sussex Downs line. At Brighton University's Moulsecoomb and Falmer campuses the CRP worked with Bike It Bob to register bicycles and advise cyclists. The partnership also supported the Brighton Toy & Model Museum in securing funding for significant entrance and lighting improvements beneath Brighton Station. Volunteers at Bishopstone, Seaford, and London Road stations continued their transformation projects, including new planting, refurbished benches, and the creation of a Pocket Park for local residents.

The CRP joined GTR staff for a Pride-month hike from Seaford and took part in the Great British Beach Clean with the Marine Conservation Society. At BAHSVIC College, students helped design a rail safety



↑ London Road Gardening Group with (L to R) Phillipa, Linda and Elspeth.



↑ Kings Award for Volunteering with the Lord-Lieutenant of Sussex, Barbara Mine and Volunteers from the Friends of Bishopstone station.

survey, while collaboration with the Thomas Paine Society led to a Lewes Station exhibition marking the 250th anniversary of American Independence.

Excitingly, Bishopstone Station received funding to redevelop its disused waiting room into a heritage events space. The Friends of Bishopstone Station gained national recognition, winning The King's Award for Voluntary Service and a commendation at the National Heritage Railway Awards.

These achievements showcase how community partnerships, volunteer dedication, and successful funding applications continue to enhance the railway environment and strengthen community engagement across the Sussex Downs.

2025 RAILWAY 200

2025 was Railway 200 year, the 200th anniversary of the birth of the modern railway. The Stockton & Darlington Railway opening on 27th September 1825. Britain and the world changed forever. Railway 200 celebrated the past, present and future of rail.

SCRP wanted to play its full part in these celebrations, and we held Railway 200 events across our area. These started in Winnersh on 10th January 2025 when we unveiled the first of our blue plaques and finished in Hastings on 15th March 2026 when the Inspiration exhibition train left Hastings. This insert into our annual review marks this very special year, and SCRPs contribution to it.

Much of our activity was Railway 200 themed, and we particularly focused on our 200 blue plaques, our showcase event on 1st August (1.8.25!) and the visit to several of 'our' stations of the exhibition train Inspiration.



Our first Railway 200 event, Winnersh 10th January 2025





1.8.25 EVENT

Our showcase event in Lewes town hall took place on Friday 1st August :- 1.8.25! Hundreds of people attended the celebration of communities and their railways, rail enthusiasts, community groups and their families flocked to Lewes for our Rail Fair 200.

Over 30 stalls highlighted our work and that of our partners, including train operating companies, Network Rail, and many of our community organisations, from London Gatwick Airport to the Friends of Bishopstone Station. Actor Steve Bergman brought Victorian railway baron Thomas Brassey, based in Hastings, to life and Southern demonstrated their train driving simulator, much to the excitement of young, and some not so young, railway enthusiasts.

Lewes mayor Cllr Emily Clarke, deputy mayor Cllr Nicky Blackwell and Seaford town crier Peter White officially opened the gathering. The Master of Ceremonies was former BBC and ITV broadcaster and rail enthusiast Nicholas Owen.

Tim Barkley, chair of SCRP, said: "It was great to see how popular the event was. There was a wide range of stalls from partners, community groups and supporters." And, of course, our 200 blue plaques were brought together for the first time.

The day had a real buzz about it, a fantastic atmosphere. There was tremendous feedback from visitors, with one attendee described this as our most successful and powerful event ever.

BLUE PLAQUES

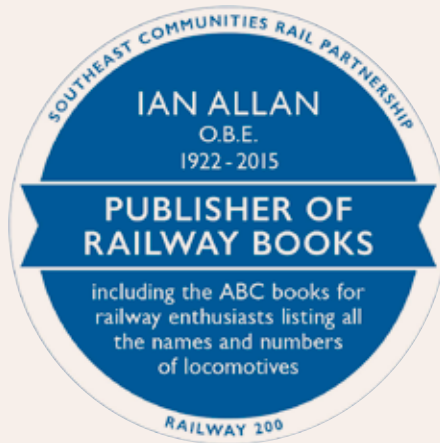
Blue plaques are seen across the country, and commemorate historic people and historic events. But Railway 200 is about the present and future of rail, as well as the past, so to mark Railway 200 SCRP commissioned 200 blue plaques. 100 were traditional plaques remembering historic events and people, 10 on each of our 10 lines, with another 100 detailing modern railway jobs, to inspire the current and future generations to consider a career in the railway industry. Historian Danny Coope, based in East Sussex, worked with SCRP and local communities to research the historic blue plaques, and the modern job plaques were sourced through our friends in the train operating companies we work with, and Network Rail.

Among the more famous names to feature are:- Queen Victoria, railway engineer Isambard Kingdom Brunel, crime writer Dame Agatha Christie, Vietnam's first President Ho Chi Minh, Winne-the-Pooh author A.A. Milne and Bee Gees singer Robin Gibb. There are also many stories of lesser-known people from station staff and signallers to a wild west performer and WH Smith bookstall assistant.

The first ten blue plaques were unveiled in Winnersh on 10th January, and all 200 were shown together for the first time at our 1.8.25 event in Lewes. A selection of blue plaques is shown here, for more information on these and details of all 200 blue plaques please

scan the QR code below





A small selection, one from each line, so just one tenth of the historic blue plaques we produced for Railway200. For a full list of the blue plaques, and the really interesting back stories behind many of them, please do **scan the QR code on p111**



Inspiration exhibition train visited by Hastings & Rye MP Helena Döllimore

Four of the 100 modern jobs displayed on our blue plaques, highlighting some of the many and varied jobs that exist on the modern railway. For the full list, and more details of these jobs, please **scan the QR code on p111**

Railway 200's incredible exhibition train Inspiration started its nationwide tour in June 2025, first visiting our patch in July 2025, when it came to the Bluebell Railway. It came to Victoria in December 2025, before a concentrated period in February and March 2026, with stops at Worthing, Bognor Regis, Lewes and Hastings stations.

Visitors to the train, in its eye-catching livery, were able to go on a journey of discovery exploring the railway's 200-year story of innovation, brought to life by interactive exhibitions and hands-on activities. SCRP helped support Network Rail, Southern, and South Eastern with the train's stopovers at 'our' stations, and it was great to see such partnership working bring so much joy and excitement to so many people.

COMMUNITY RAIL AWARD

A fitting finale to our blue plaque project came at the Community Rail Awards in Derby on 19th March 2026, organised by the Community Rail Network, the national 'trade association' for community rail.

Amongst other awards (see page 32 this review!) we were delighted and honoured to win the Railway 200 Legacy Award for large groups, against strong competition. Judge Emma Roberts said this was "A creative, visual and well thought through project clearly supporting all the Railway 200 themes. A huge amount of partnership work was undertaken to make the concept a reality and a very fitting way to mark and celebrate the 200th anniversary."



SCRIP volunteer director Kevin Boorman, Fiona Morton CEO and Stakeholder Advisory Board Chair Bob Lanzer with the award on stage at the Derby Arena, with colleagues from our partner train operating companies and Network Rail.

Michael Olden
Line officer
michael@southeastcrp.org
07939 036131



southeastcrp.org/line/sussex-downs-line

CASE STUDY

Brighton Toy & Model Museum

Working with Brighton Toy & Model Museum Sussex Downs CRP was able to assist with a successful Community Rail Development Fund application. The money has helped transform the entrance to the museum reducing anti-social behaviour and increasing the museums visibility.

Included in the regeneration was a new glass and timber framed entrance, a CCTV system to combat anti-social behaviour, lighting to illuminate the arches and walls, plus, powder coated aluminium lettering

with the Museum's name on the outside wall. With additional funding from the Railway Heritage Trust this grant has given the station underpass and museum a long overdue makeover.

Museum General Manager Jan Etchings said: "The top of Trafalgar Street is one of the main gateways into North Laine and it hasn't looked its best for a long time. The regeneration project isn't just good for the museum but also for the wider community".



Trafalgar Street Mural with artists (L to R) Amber Lucia, Reggie Rai Lacey, Myla Susie and Sinna One.



Brighton Toy & Model Museum with (L to R) Jan Etches Museum Director and Michael Olden Sussex Downs CRP.

More details: southeastcrp.org/case-studies/brighton-toy-model-museum/



Tonbridge, Redhill & Reigate Line

southeastcrp.org/line/tonbridge-to-reigate-line

This year saw a bumper year of activity at Tonbridge station with a birthday celebration, new artwork and flourishing station partnership with The Oaks Specialist College.

New artwork, inspired by railway history, has given added interest and colour to the waiting room on platform 3.

At Christmas passengers at Tonbridge station were delighted by three days of carol singing from The Oaks students who sang traditional and new songs bringing real cheer to the over bridge.

At Reigate artwork by a local student has been prepared for the waiting shelter, strengthening the tangible connection between the station and Reigate School of Art.

The station partners along the line continue to look after the stations with great dedication. Growing Redhill's planters bring real joy to Reigate station. Nutfield Station Gardens maintain a very special wild mini garden alongside their planters.

Finally, The Oaks continue their gardening at Tonbridge whilst looking to expand their work.



↓ New historical inspired artwork in platform 3 waiting room at Tonbridge station, gives a refresh look for passengers.



↑ Mural at Tonbridge with Railway 200 themed update by local artist.



↑ Staff and students From the Oaks host their May Fair on the bridge at Tonbridge station.

Tracey Simmonds, Careers Coordinator, The Oaks said: "Our partnership has truly flourished, growing into a vibrant and meaningful community project. Everyone involved gains so much from this collaboration. The station enjoys a beautifully maintained garden area and planters all year round, while our learners thrive through their active involvement in the community and gain real insight into the responsibilities and routines of going to work. Fridays have become a highlight of the week—our learners genuinely look forward to spending time at the station and absolutely love being part of the project."

The line steering group are also thrilled to have welcomed Growing Redhill, Nutfield Station Gardens, The Oaks and County Care as members.

CASE STUDY

Celebrating Tonbridge Station with The Oaks, station partner

For Community Rail week, Railway 200 and Tonbridge stations 183rd Birthday students from The Oaks Specialist College held an event which showcased their crafting skills, along with station staff who held a cake sale, add in the banners and the station had a real party atmosphere.

This great event brought organisations together, raised the profile of the partners at the station, raised money for good courses, including £188 for the Hospice in the Weald and helped grow the confidence of the participants.

"The station has become a familiar and welcoming place for them, helping to build their confidence and offering valuable opportunities to connect with others".

Tracey Simmonds The Oaks



Staff, partners and passengers celebrate Tonbridge stations 183rd Birthday.

More details: southeastcrp.org/case-studies/community-rail-week-plus-rail-200-event/



Uckfield & East Grinstead to Oxted Lines

southeastcrp.org/line/uckfield-east-grinstead-line

The lines have seen a number of community led improvement projects, including wayfinding for the Vanguard Way long distant footpath, new planters on platforms and signposting for local community groups such as Voluntary Action Surrey East.



The station partners along the lines continue to look after the stations with great care. At both Buxted and Crowborough the partners have rebuilt the stations planters, filling them with some fabulous blooms.

curiosity in this famous resident, encourage tourism and create ongoing opportunities, such as a potential exhibition and mural.

Also at Crowborough the unveiling of a naming plate celebrates the linked between the town and Sir Conan Doyle. It is hoped that this will spark

On the day of the naming the local community welcomed Sir Conan Doyle's nephew, Richard Doyle, and Cllr Whittle, Mayor of Crowborough Town Council for a celebration of this



↑ The rebuilt planter at Crowborough station created by the station partner.

← Richard Doyle, Cllr Whittle, Mayor of Crowborough Town Council and Mrs Payne cut the ribbon on the Sir Arthur Conan Doyle naming plate at Crowborough station.

historic connection. This was most fitting for a community rail station given that Sir Conan Doyle was a man whose genuine commitment to community has made a lasting difference to Crowborough and its voluntary organisations.

The line steering group is also delighted to have welcomed new station partner and member, Step by Step school at East Grinstead.

CASE STUDY

Celebrating Crowborough station past and present

A special event saw the doors of the new Community Hub open for the first time welcoming local people, MP Nus Ghani, the deputy Lord Lieutenant, GTR staff, Community Rail Network, station partners, representatives from community groups and many more.

Along with catering provided by the local community pantry, the ticket hall was used to host a new permanent display of the town's

notable buildings from the past up until the present day and celebrities who have connections to the town. Also displayed were the Railway 200 Blue Plaques banner highlighting railway people from the past and their stories.

In order to engaging local people in the hub those gathered were encouraged to give their comments and suggestions to develop and inform planning for the hub's future.

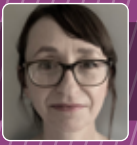
MP Nusrat Ghani, for Sussex World, said:

"Having been supporting the project for years, it was wonderful to join the Crowborough Deputy Mayor and Chair of the Community Hub Committee Cllr Paul Goddard and our local communities in celebrating the start of a very exciting chapter of the project".



Crowborough Community Hub volunteers, Paul Goddard and Nus Ghani MP gather for first public opening of Crowborough Hub.

More details: southeastcrp.org/case-studies/r200-event-at-crowborough-station/



Windsor to Reading Line

southeastcrp.org/line/windsor-and-eton-riverside-line

Windsor & Eton Riverside Station's 166th birthday saw refreshments supplied by Optalis Ability Catering. Vocalist Sarah Martin serenaded us with Christmas classics, and The Windsor Soundswell Choir sang beautiful Carols. Children from Our Lady of the Rosary School made decorations for the tree.

The Mayor of the Royal Borough of Windsor & Maidenhead, Councillor Mandy Brar, said "It is wonderful to see this type of event and the music was delightful; a very memorable occasion."

Reading stations Family Fun Day in Brunel Arcade, featured activities including games, a swap shop, quizzes, badge making and art workshops. The British Transport Police provided their wonderful mobile mini railway safety exhibit and Reading Buses had games and prizes.



↑ Windsor Soundswell Choir
Image taken by Sandy Mahon.

The event was a collaboration between Southeast Communities Rail Partnership, Hampshire Community Rail Partnership, Network Rail, Reading Museum, Reading Buses, South Western Railway, Reading Museum and Reading Buses.

Robert Williams, CEO Reading Buses said "We were delighted to join in the fun to support our railway colleagues in generating positive perceptions about public transport in the area. The event really displayed the creativity of the community rail partnership at its best."

← Left to right - Mayor's Consort, Mr Harry Brar, The Mayor of the Royal Borough of Windsor & Maidenhead, Councillor Mandy Brar, Optalis client, Inna Selivan, Optalis.



In January the new mural at Winnersh Triangle Station was unveiled to mark Railway 200. The design incorporated the past, present and future of the railway. The mural was made possible by Winnersh Parish Council, South Western Railway and Network Rail, along with Winnersh Triangle Business Park. Councillor Pru Bray of Winnersh Parish Council said "The parish council is delighted with the mural, which really makes a difference. This kind of initiative is what we had in mind when the parish council agreed to adopt the two stations in Winnersh and it has been great to work with the Community Rail Partnership, Southwestern Railways and Network Rail over the past year to celebrate 200 years of the railways."



↑ Winnersh Triangle mural
Image taken by Sandy Mahon.

CASE STUDY

Artwork for Earley Station Workshops with local school children

The concept was to involve a local school with the aim of creating artwork to be displayed, working with an artist educator at All Saints School, Wokingham, two creative sessions with year groups 5 and 6 were held.

It was a great and enjoyable creative experience for the children. The school benefited from a large amount of art materials for future use and the wonderful artworks, themed around hidden wildlife have enhanced Earley Station enormously for all to enjoy. Local families were delighted to see their children's work on display, fostering a sense of community.



Workshop at All Saints Primary School, Wokingham.

More details: southeastcrp.org/case-studies/artwork-for-earley-station-workshops-with-local-school-children/

Go Learn / Go Train - education service

Cath Reed
Education officer GTR
cathreed@southeastcrp.org
07535 511718



Maddy Mills
Education officer GWR
maddy@southeastcrp.org
07852 221274



southeastcrp.org/education-in-berkshire-and-surrey

Our education programmes Go Learn(with GTR), and Go Train (with GWR), continue to grow with repeat school bookings year on year. There are a variety of workshops for Year 6 including Rail Safety, Planning a Journey, Railway Careers and Sustainable & Healthy Travel. Included in the programme is the offer of free station visits with lots of activities to complete, the favourite is always the 'Buying a Ticket' activity! For those young people

with additional needs, the Try a Train programme includes a workshop and a train trip.

In April 2025 our Go Learn and Go Train programmes were awarded the Council for Learning Outside the Classroom's (LOtC) Quality Badge. It is the only scheme that recognises quality of learning and effectiveness of risk management. The scheme offers teachers the reassurance that providers have appropriate risk

management structures in place and supports teachers in organising their railway station visits. Held by some of the leading providers of educational visits, the LOtC Quality Badge is endorsed by the Department for Education who recommend schools use awarded providers for their educational visits and trips.



↑ Primary school children learning with Go Learn.



↑ Southern station staff help children navigate station safely.

← Students love the ticket buying exercise in Go Learn and Go Train.

↓ A group of students on the Go Train travel part of their workshop.



Travelling with Confidence

Cath Reed
Education officer GTR
cathreed@southeastcrp.org
07535 511718



Maddy Mills
Education officer GWR
maddy@southeastcrp.org
07852 221274



southeastcrp.org/education-in-sussex

The Travelling with Confidence project, funded by Motability, is now in its second year and has been a huge success! The Education Team is working with 15 different schools, colleges and charities, which is about 350 people.

The aim is to increase people's confidence to travel independently on public transport. The programme consists of at least three workshops and three trips. Workshops focus on how to travel safely, how to get help and how to plan their journeys. Some groups are choosing to try

several different modes of transport in one day, others are visiting places to help with their coursework (one photography group wanted to visit the V&A Museum in London) or develop their life skills by visiting Ikea to see how much it would cost to set up their own home.

At the start of the project, the challenge was set to see how many different types of public transport could be used. So far, travel has taken place on train, bus, tube, tram, monorail (at Gatwick Airport), ferry and hovercraft!

↓ *Travel with Confidence takes to the buses.*



← *A ferry ride for the Travel with Confidence trip to London.*

↓ *Travel with Confidence team buy their tickets.*



↑ *On board a tram, Halow Students on their Travel with Confidence trip.*



EDUCATION TEAM:

END OF YEAR REPORT

Go Train on North Downs Line

- 1,052** Year 6 pupils participated in workshops
- 453** Year 6 pupils participated in station visits
- 59** Young people participated in Try a Train workshops
- 67** Young people participated in Try a Train trips

Travelling with Confidence (TwC) project

- 293** Young people participated in workshops
- 554** Young people participated in trips

Feedback

What has been most beneficial on the TwC programme? "Stretching the travel type opportunities students have not been on before and building confidence and skills to travel independently using the apps."

Head of Key Stage 4, Addington School, Wokingham

"The discussion allowed the children thinking time, and got them to participate. The section on level crossings was particularly eye-opening."

Teacher, Broadfield Primary School, Crawley

"Very clear information for children – especially as some are taking the train to high school starting in September."

Teacher, West Park CE Primary, Worthing

"Having done the Try a Train session last year the new format [TwC] is much better. Previously we had one session, this was difficult for our young people to focus on the information to learn about planning trips. The new format is much better having time to focus and retain information while planning. Then taking the trip later. A great session".

Group leader, 'HALOW' – an organisation supporting young adults with learning disabilities and autism in Surrey

Go Learn on GTR Lines

- 1,627** Year 6 pupils participated in workshops
- 745** Year 6 pupils participated in station visits
- 300** Young people participated in Try a Train workshops
- 300** Young people participated in Try a Train trips

Stations which hosted visits

Bognor Regis

Brighton

Eastbourne

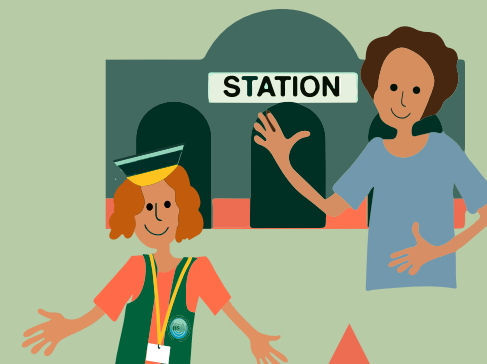
Haywards Heath

Horsham

Lewes

Littlehampton

Reading



Thank you from the education team to all stations and staff for your support

"Station visit activity booklet is excellent – extra activities in case everything was finished, great for behaviour management. Just a HUGE thank you. We get so much from this – rail safety, historical / practical experience and subsequent writing topics."

Teacher, West Park CE Primary, Worthing

Community Rail Awards 2026



Shortlisted in five categories for this year's Community Rail awards we were delighted to win top prize for our 200 Blue Plaques (see page VIII) and Travel Ambassadors projects.

We are also proud to have to have been placed 3rd in the highly competitive 'Tourism & Leisure' category for The Arun Valley Line: Beyond the Rails podcasts and films, a partnership between SCRP, Horsham District Council and Whistlestop Arts.

Our final placing of the night was for the SCRP's Annual Review 2024-25 in the 'Most Effective Communications Campaign' category.

Congratulations also go to our partners Wokingham Disability Partnership Board who won in the 'Community Creative Projects & Station Arts' and to Farnborough Street Residents Association for winning 'Outstanding Contribution to Community Rail by a Group', and placing 3rd in 'Best Community Engagement' category.

In the 'Empowering Diverse Groups' our Travel Ambassadors project won for inspiring confidence, removing barriers and helping everyone feel truly welcome on the railway.

The insights gained by the ambassadors whilst testing real journeys have supported other passengers and given actionable ideas to transport partners to improve accessibility.

Donna Morgans, Head of Supported Employment Services, said: "Three of the Travel Ambassadors are now in paid employment and the other is in further education, this partnership has made a real difference."

We thank everyone who have made these projects such wonderful successes.



Sara Grisewood collects award on behalf of Farnborough Street Residents Association for 'Outstanding Contribution to Community Rail by a Group'.

At SCRP we are proud of the breadth of partners we work with and we value the connections, strength and accountability that these bring.

Here is what our train operating partners say about us:

Southeast Communities Rail Partnership are one of our key community partners in helping deliver GTR's vision 'to create great journeys every day for a sustainable future'.

In particular, you help us win customers and promote sustainable travel, through promoting local attractions and destinations. You are our eyes and ears into local communities helping us tackle social and community issues that impact the railway and you provide us with the social impact evidence that community rail has a real impact.

Patrick Ladbury, Senior Community Partnerships Manager, Southern/ GTR

South Eastern Railway are proud to be partners with Southeast Communities Rail Partnership. Their innovative award winning 200 Blue Plaques Project was a highlight in the Railway 200 year of celebration, and their involvement with the Railway 200 train Inspiration at Hastings helped make it's stay there something very special.

The energy and enthusiasm of the line officers and volunteers is contagious and it's always an absolute pleasure to get involved with their projects and events which deliver so much to the community.

Matthew Fraser, Community Relations Manager

SWR are delighted to be funding and supporting the work of the Southeast Communities Rail Partnership.

On the Windsor to Reading CRP highlights this year have included starting and finishing the Railway 200 year, with two very different events: a new mural at Winnersh Triangle Station and Christmas celebrations at Windsor and Eton Riverside.

It's been fantastic to welcome Anna as the new CRP Officer on the Hounslow to Richmond CRP and we look forward to continuing the engagement with a wide variety of groups and fun activities.

Paula Aldridge, Community Rail Manager, South Western Railway

"GWR are proud to fund and support the Southeast Communities Rail Partnership, which plays a vital role in empowering local people, enhancing sustainable travel choices, and reducing environmental impact across our network. By investing in this partnership, we help deliver meaningful community benefits—strengthening local connections, supporting inclusive growth, and improving the places our passengers live, work, and travel through."

Emma Morris, Senior Community Impact Manager, Great Western Railway



For a full list of our current partners please see our website





Southeast Communities Rail Partnership, Lewes Station,
Platform 5, Station Road, Lewes, East Sussex BN7 2UP

www.southeastcrp.org

 [facebook.com/SCRPCIC](https://www.facebook.com/SCRPCIC)

 [instagram.com/southeastcrp](https://www.instagram.com/southeastcrp)

 [linkedin.com/company/southeast-communities-rail-partnership](https://www.linkedin.com/company/southeast-communities-rail-partnership)

 <https://bsky.app/profile/southeastcrp.bsky.social>

volunteers; Surrey Hills National Landscape;
Blackwater Valley Countryside Trust



↑ *A year of celebration!*
Credit: Josh Webb.