

Southeast Communities Rail Partnership Weekly Highlights

DATE 29th Nov 2024

1066: Hastings to Tonbridge
Andy Pope, Line Officer
andy@southeastcrp.org

- Supported Clair at her Sussex Downs steering group meeting
- Re started the Aspens train trips, the first of five to completed monthly by the end of March.
- Visited local artist to discuss railway related art in relation to the R200 project.
- Joined the 2025 staff policy quiz.
- Next week I'll be joining Sara at her winter warmer event in Guildford and hosting the 1066 line steering group



Marketing and Communications

Paul Bromley Comms Officer
paul@southeastcrp.org

OFFICIAL

Southeast Communities Rail Partnership

Get example of partner support and visibility

Dedicated **Railway 200** page on their website and a separate **Railway 200** category for all stories.

National branding and images until they start generating our own content.

<https://www.southeastcrp.org/railway-200/>

RAILWAY 200 26

Mostly focusing on Railway 200 preparations this week.

➤ Attended CRN webinar and it was great to see two mentions for SCRP's preparations



➤ Downloaded CRN's toolkit and looked at marketing opportunities in January

➤ SCRP working group meeting to discuss progress and next steps

Thanks for your support...

Railway 200 involvement in **Community Rail Awards** in March

Railway 200-themed **Community Rail Week** in May

Community Rail Lancashire are working with the Girl Guides to produce a Railway 200 badge focusing on STEM.

The **Southeast Communities Rail Partnership** will be producing 200 'blue plaques' to celebrate 200 people connected to its railway lines

A celebration, in July, of the Heart of Wales Line by the **Heart of Wales Community Rail Partnership**

The **Heart of England Community Rail Partnership** will be working with local artists and schools to produce a celebratory banner

Greater Anglia is liaising with Community Rail Partnerships and others in the region to organise a range of Railway 200 related activities in 2025

greateranglia
CRL
Southeast Communities Rail Partnership
Community Rail Network
Heart of England Community Rail Partnership

25



Arun Valley: Gatwick Airport to Bosham
Rowena Tyler, Line Officer
rowena@southeastcrp.org



- Filming and interviews for the Arun Valley Line podcast
- Met with Crawley Signal Box members about Rail200 and other projects. Lots of interest and suggestions for involvement.
- Liaised between Chichester Rotary who have donated a Christmas tree, brackets and lights to the station, and GTR maintenance, who will kindly install soon.
- Pulborough Signal Box work is almost complete – the workforce even reinstated the floral element, which Storm Bert tried to dislodge, without success.

Hounslow to Richmond
Michael Olden Line Officer
michael@southeastcrp.org

- Meeting with Sidonie Forest-Brown, Zahra Ali and new to the team Michael Everad to catch up with HRCRP developments
- Met with councillors, transport project officers and Barnes High Street manager to finalised designs for the new Barnes Mural which is planned to complete at the reopening of the Access for All developments at the station in January 2025



Barnes Station Mural

"WELCOME TO BARNES"

Marshlink Hastings-Ashford International
Paul Bromley Line Officer
paul@southeastcrp.org



It's been an AAH week.

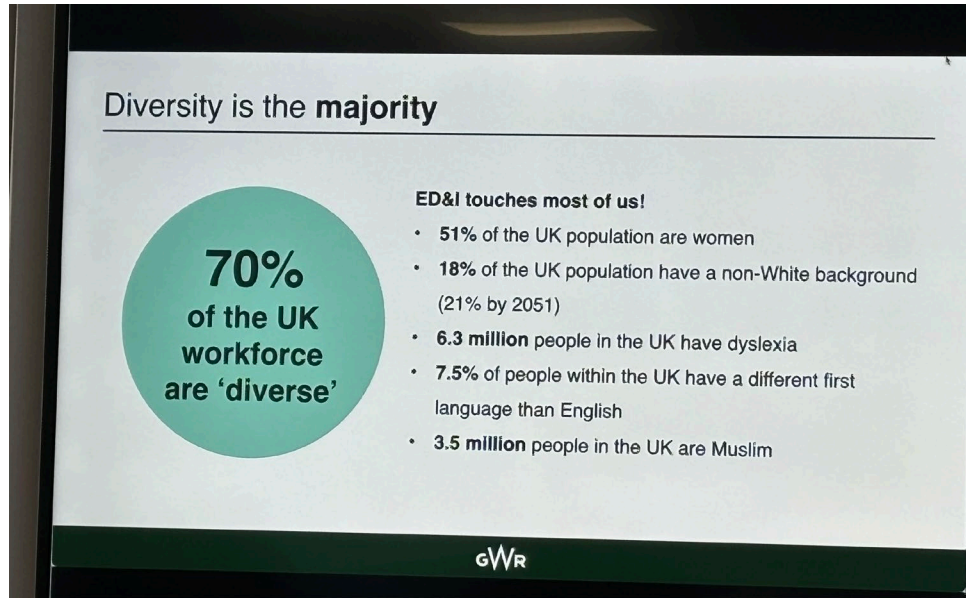
Appledore – site visit with East Sussex Veterans, Southern and parish council over using empty station building for bike repairs

Ashford – railway memories day linked to Railway 200

Hastings – discussion with art department over funding for station vinyls project



North Downs Gatwick- Redhill- Reading Line Officers: Sara Grisewood sara@southeastcrp.org



Slide from the GWR EDI presentation



Artwork on the windows at Gloucester Transport Hub

Attended the EEH Women and Girl's Safety on Public Transport Conference online.
Attended the GWR catch up for CRPs in Gloucester in person; although Storm Bert stopped many from attending.
Had a SCRPs policies workshop in Lewes which encouraged useful discussion.
Railway 200 working meeting.
Looking forward to the Winter Warmer event in Guildford next week.

Sussex Coast
Line Hove to Littlehampton
Lynda Spain Line Officer
lynda@southeastcrp.org

- Collected the charity boxes from the wonderful team at MIND in Brighton & Hove. These will be used to collect donations from people enjoying the music at the Supajam College busking event at Hove Station. The event will be on Wednesday 11th December between 2 and 4pm.
- Made contact with Downsview College, station partner at Hove and Portslade, with a view to setting up a college visit with GTR Education and Careers staff.
- Railway 200 Working Group Meeting
- Staff meeting to review organisational policies in Lewes.
- Photo is collection boxes and flyer from MIND in B&H



Sussex Downs Line Seaford to Brighton
Clair Brough Line Officer
clair@southeastcrp.org

- Sussex Downs Steering Group Meeting hosted by Sussex University
- Visit to Anne of Cleves House, Lewes with a group of learning-disabled adults as part the 'Time Travel' project, organized by Culture Shift. The group visit places of historical interest to engage with local heritage and increase confidence to travel.
- Staff briefing on policy updates.
- Photo: A king for a day; original Tudor fireplace



Uckfield - East Grinstead - Oxted
Sharon Gray Line Officer
sharon@southeastcrp.org

- Extensive photo archive material offered for a project at Crowborough will be viewed next week. I intend to engage with a community group to oversee the project. Further, a WW1/2 archive has been offered for view which should tie in with the 80th anniversary being discussed for next year.
- I have managed to source an offer of office furniture for the station master's house at Edenbridge from a local group, this in turn will enable me to use the venue for my 2025 meetings.



Ton- Reigate
Sharon Gray Line Officer
sharon@southeastcrp.org

- A note from The Oaks regarding their event at Tonbridge station last week:

Hi Lee and Sharon

I just wanted to say a huge thank you for allowing us to share our learner made products at the station last week.

Our learners were very excited about 'running the shop' and for some, it was the first time they had been exposed to a working environment; interacting with customers, offering customer service, using a credit card machine, and calculating change in cash transactions.

Despite the cold snap, they all said they enjoyed it and for some, the experience has inspired them to look at retail employment opportunities.

We made £240 which for just a few hours a day, is fabulous. This money will be reinvested in new materials for future projects.

Once again, thank you, we all had a fabulous time and value our partnership with you.

Best wishes, Tracy

- I have tracked down the family of one of the Tonbridge Station staff who appeared in the mural – await permission to use his details.



Windsor to Reading
Sandy Mahon, Line Officer
sandy@southeastcrp.org



This week have been circulating information and liaising with station managers regarding SWR Christmas shoebox and gift appeal for the elderly, vulnerable and homeless. Sunday 1st – Saturday 7th December boxes can be handed to ticket window staff.

Plans to help out at Winter Warmers in Guildford.

Attended launch at Waterloo to mark the start of the full roll out of SWR transformational new Arterio trains across the network. Fun activities throughout the day and of course, cake!

Services we provide



Primary Schools

The Go Learn programme will help your pupils



Secondary Schools & Further Education

Independent Train Travel Training for students



Try a Train

The 'try a Train' experience is an ideal

Go Learn Education
Cath Reed Education Officer
cathreed@southeastcrp.org

- Monthly Report prepared, reaching 3000 pupils this year
- Lovely feedback 100% positive
- Next week reviewing Platforms for Change work with Scouts and preparing for Motability programme

SCRP CIC News

Fiona Morton CEO & Trevor Field Finance Officer

This week attended discussion on improving safety of women and girls on transport. Measures need to be built into physical and social design of transport infrastructure to benefit most people. Graphic from World Bank above illustrates how, if we have a rich understanding of different travel patterns, this will have a positive impact for us all.

Railway 200 preparation meeting and updates for staff

Workshop to update staff on SCRП policies and mini festive get together

Next week it is GTR drop-in, Hounslow to Richmond and 1066 steering groups.

