

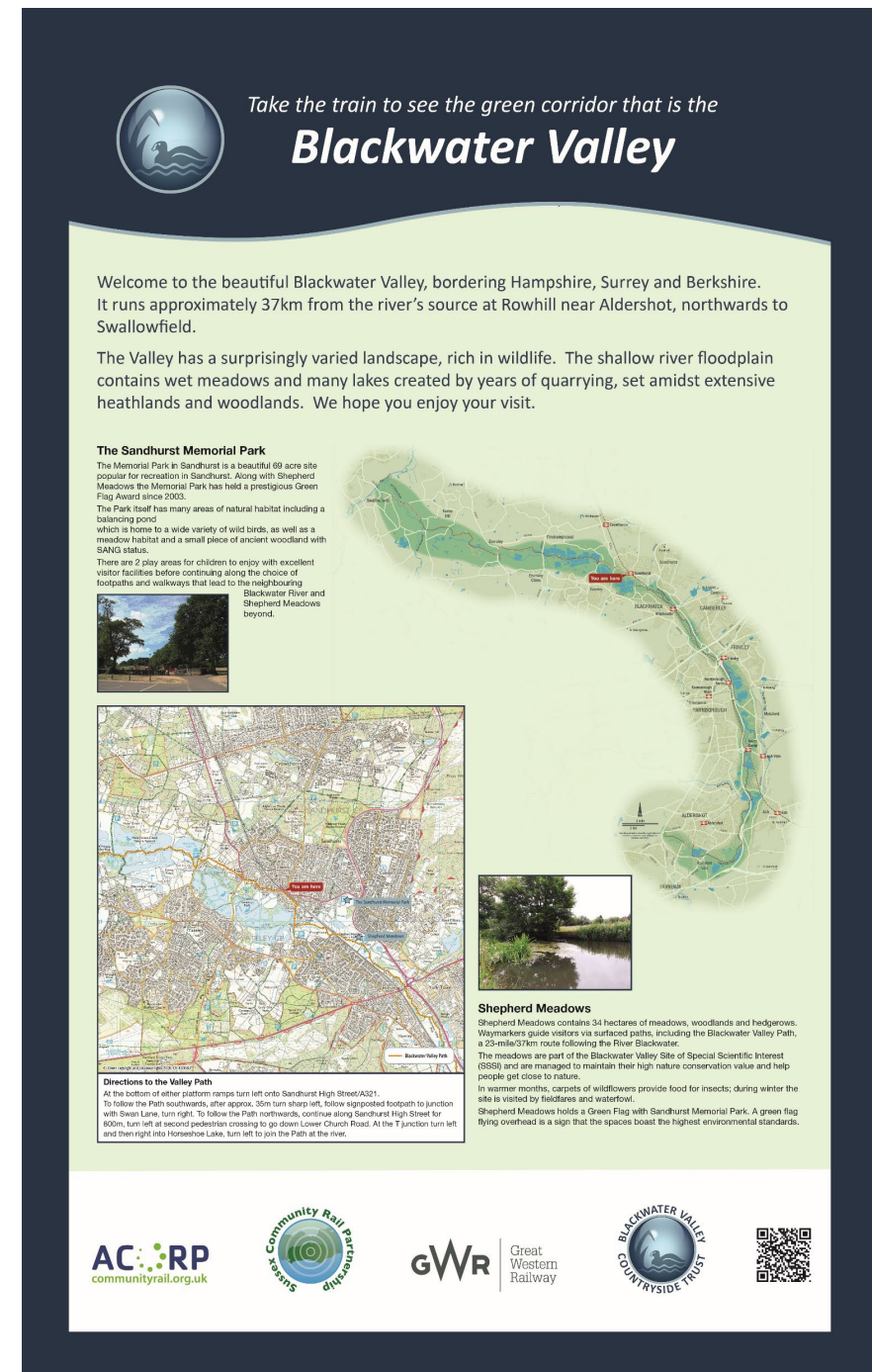
Southeast Communities Rail Partnership Weekly Highlights

DATE 16th Feb 2024

North Downs Line Officer Gatwick- Redhill-
Reading
Sara Grisewood
sara@southeast.crp.org

Thank you to everyone for your patience and help while I have been away and to Cath Reed for her weekly updates. It was good to be back at work this week, with many events coming up there are lots of emails and meetings; especially planning the unveiling of the Guildford Design Awards plaque next week at Guildford Station. With representatives from GWR, CrossCountry, SWR and Network Rail, alongside CRN and the local Arts Society it will be a lovely opportunity to celebrate successfully working in partnership to create lasting art projects to enhance station environments.

I also had a very fruitful discussion with Chris Smith about future plans for Blackwater Valley Stations and further planning for our joint event with Surrey Hills National Landscape in May during Community Rail Week. This event aims to highlight the differences in the landscapes and promote the train line which links them.



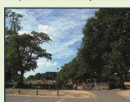



Take the train to see the green corridor that is the
Blackwater Valley

Welcome to the beautiful Blackwater Valley, bordering Hampshire, Surrey and Berkshire. It runs approximately 37km from the river's source at Rowhill near Aldershot, northwards to Swallowfield.



The Valley has a surprisingly varied landscape, rich in wildlife. The shallow river floodplain contains wet meadows and many lakes created by years of quarrying, set amidst extensive heathlands and woodlands. We hope you enjoy your visit.

The Sandhurst Memorial Park
The Memorial Park at Sandhurst is a beautiful 69 acre site popular for recreation in Sandhurst. Along with Shepherd Meadows the Memorial Park has held a prestigious Green Flag Award since 2003. The Park itself has many areas of natural habitat including a balancing pond which is home to a wide variety of wild birds, as well as a meadow habitat and a small piece of ancient woodland with SANG status. There are 2 play areas for children to enjoy with excellent visitor facilities before continuing along the choice of footpaths and walkways that lead to the neighbouring Blackwater River and Shepherd Meadows beyond.



Shepherd Meadows
Shepherd Meadows contains 34 hectares of meadows, woodlands and hedgerows. Waymarkers guide visitors via surfaced paths, including the Blackwater Valley Path, a 23-mile/37km route following the River Blackwater. The meadows are part of the Blackwater Valley Site of Special Scientific Interest (SSSI) and are managed to maintain their high nature conservation value and help people get close to nature. In warmer months, carpets of wildflowers provide food for insects; during winter the site is visited by fieldfares and waterfowl. Shepherd Meadows holds a Green Flag with Sandhurst Memorial Park. A green flag flying overhead is a sign that the spaces boast the highest environmental standards.

Directions to the Valley Path
At the bottom of either platform ramps turn left onto Sandhurst High Street/A321. To follow the Path southwards, after approx. 30m turn sharp left, follow signposted footpath to junction with Swan Lane, turn right. To follow the Path northwards, continue along Sandhurst High Street for 600m, turn left at second pedestrian crossing to go down Lower Church Road. At the T junction turn left and then right into Horsehoe Lake, turn left to join the Path at the river.





Marketing and Communications
Paul Bromley Comms Officer
paul@southeastcrp.org

Paul is on leave

1066 Line: Hastings to Tonbridge

Andy Pope, Line Officer
andy@southeastcrp.org



The culture shift team at Bexhill station after the fact-finding trip to the museum.

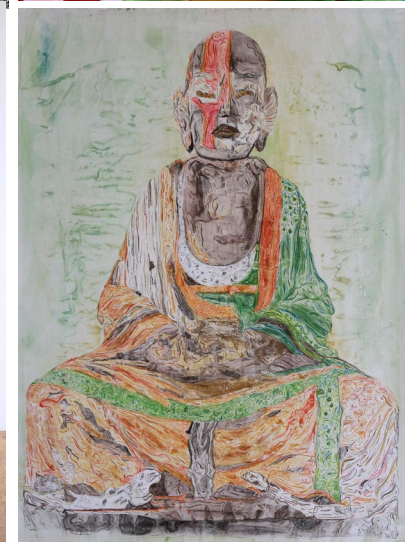
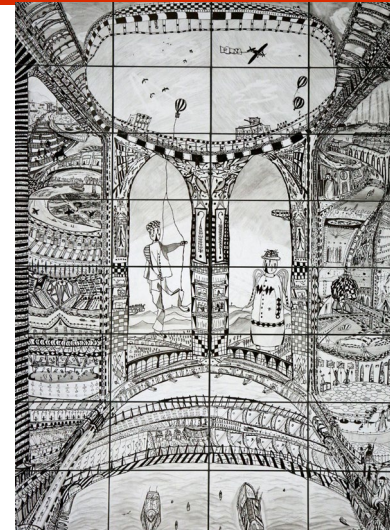
- Made contact with Ticehurst PC with a view to setting a contact for Stonegate Station.
- Attended the Hastings Sustainable transport meeting to discuss the new Green connections project for the Station to Seafront corridor.



- Grant Application to Robertsbridge PC for the garden project.
- Team 1-2-1s started this week.
- Attended the Hastings Green corridor walk with the consultation group.

Arun Valley Line: Gatwick Airport to Bosham
Rowena Tyler, Line Officer
rowena@southeastcrp.org

- Various meetings with GTR, refining station partner application processes.
- Discussion with SCRP website developer for GTR/SCRP destinations posters.
- Christ's Hospital school submitted artwork for Horsham station – 36 images to choose from, (4 examples shown here). SM and I have quite a job ahead of us.



Hounslow to Richmond
Michael Olden Line Officer
michael@southeastcrp.org

- A week of meetings and emails
- A CRP officers get together on Monday
- Good news on the Bretford Bridge project with Network Rail agreeing to site a proposed mural.
- Talks with artists about working with a local school on this.
- Catching up with Fiona and Paul
- And this Friday the launch of Feltham Bicycle hub




Marshlink Line Hastings - Ashford International
Sara Grisewood, Line Officer
sara@southeastcrp.org



It was good to be back with lots of events coming up. The week was all about responding to emails, and setting meetings: Steering Group planning and action plan updates; bike marking workshops; a meeting with all the groups interested in Hastings Plaza site with Andy Pope next week. And a final catch up next week with Kate Richards before she sadly leaves Marshlink for Brighton. Photo Kate and Michael at Ham Street.



ASHFORD FESTIVAL OF RAILWAY MODELLING
6 & 7 APRIL 2024
ASHFORD COLLEGE & TOWN CENTRE VENUES



50 MODEL RAILWAYS, SOCIETIES & TRADERS
SPECIAL EXHIBITIONS
TRACKS ACROSS THE SPECTRUM - RAILWAYS AND AUTISM
AND
140 YEARS OF THE MAIDSTONE EAST TO ASHFORD LINE



WWW.AIMREC.CO.UK

I am having a meeting next week with Fred Garner at Aimrec to discuss this years Ashford Festival of Railway Modelling. We will have a pop up stall at the Station and will be showing Stephen Israel's film All Change at Ashford College. It is also intended to include an exhibition about the Rye and Camber Tramway.

Sussex Coast Line Hove to Littlehampton
Rowena Tyler Line Officer
rowena@southeastcrp.org

- Planning next month's artwork project for Littlehampton, SAP application submitted.
- Drafted press article on the Lost Railways project – the boards are in and look great!
- Handover talks with outgoing SM, waiting to meet new SM(transferring from Lewes) and new ASM.

“Happy Valentine’s Rowena.” A nice message from a station partner, with a beautiful photo of their Valentine’s installation.



Go Learn Education
Cath Reed Education Officer
cathreed@southeastcrp.org

On vacation/ Toil



Sussex Downs Line Seaford
to Brighton
Paul Bromley Line Officer
paul@southeastcrp.org

Paul is on leave



Uckfield - East Grinstead - Oxted
Sharon Gray Line Officer
sharon@southeastcrp.org

- Uckfield & East Grinstead steering group meeting well attended by good cross section of community and industry. Further related actions including: EG disability access, Bluebell Railway, project for EG Museum.
- Crowborough Community Hub has moved forward several paces with interest from Railway Heritage Trust and a forthcoming NR Green Fund application meeting.
- Volunteers Brighter Uckfield at Uckfield station.



Ton- Reigate Line
Sharon Gray Line Officer
sharon@southeastcrp.org

- Date agreed for County Care garden investigation/inspiration in preparation for creation of their own community garden. 7 March.
- East Surrey Arts collaboration with Reigate College now proposed May. New installation has gone to print.
- Tonbridge mural – gone to print.
- New Redhill draft history project submitted to GTR for approval.
- Still await confirmation of date for bus event at Redhill.



Windsor to Reading Line
Sandy Mahon, Line Officer
sandy@southeastcrp.org

BikeRegister in numbers



- This week I had a session with Nick Roach from Selectamark. He talked me through the Bike Register system, the secure database that all UK Police Forces have access to.
- Having your bike marked reduces the chances of becoming a victim of cycle theft and if unfortunately your bike is stolen, there is a much greater chance of being reunited with it.
- I learnt about the various bike marking kits and how to apply them correctly and log the details.
- Looking forward to putting this into practice at my next Dr Bike event at Wokingham Station.

Go Train GWR Education
Maddy Mills Education Officer
maddy@southeastcrp.org



You are invited to a FREE

Thursday 15th
February 2024

FAMILY FUN DAY

— at Reading Station —

Brunel Arcade
Reading Station
RG1 1LT

Enjoy activities including:

- Quizzes to enjoy exploring the station
- Meeting British Transport Police; you may be lucky enough to see inside a police van
- Using props to take photos as someone who works on the railway
- Signalling activity for Lego fans
- Decorating signs for the station

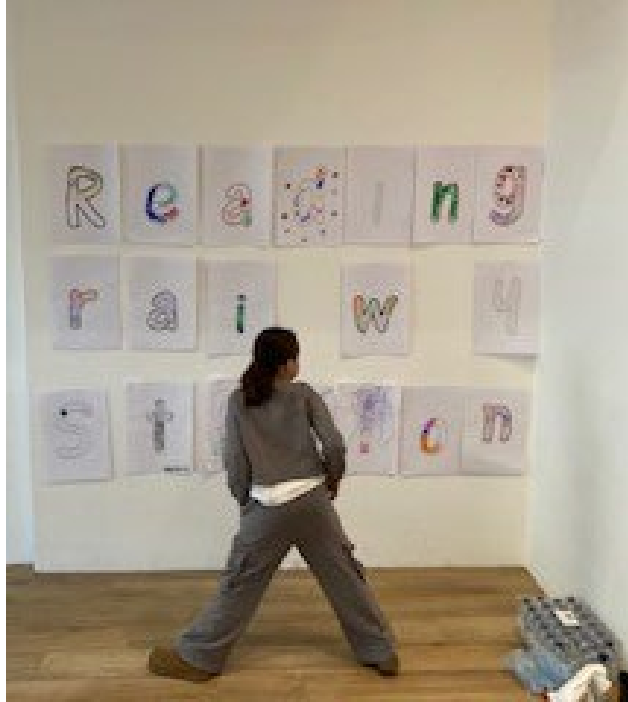
Suitable for ages 4-11. Children must be accompanied by adults.

Time slots between
10 am & 3.30 pm

Booking essential

<http://tinyurl.com/58xbdwb9>

- Try A Train workshop and train trip with Berkshire Vision, Reading. 10 x young people with visual impairment or who are blind. Travelled from Reading to Slough to hear/feel IET's whizzing through at 125 mph! Dan Pearce from GWR assisted. See photo.
- Helped run Family Fun Day at Reading Station on Thursday. Event has sold out. Will update in next week's weekly report.



SCRP CIC News

Fiona Morton CEO & Trevor
Field Finance Officer

- Assisting with grants for projects in Hastings & Ore
- Responded to ESCC LTP4 consultation
- Contributed to Gatwick Northern Runway inquiry
- Attended Family Fun Day at Reading Station A joint event with Hampshire Community Rail, Network Rail, SWR, GWR and BTP

