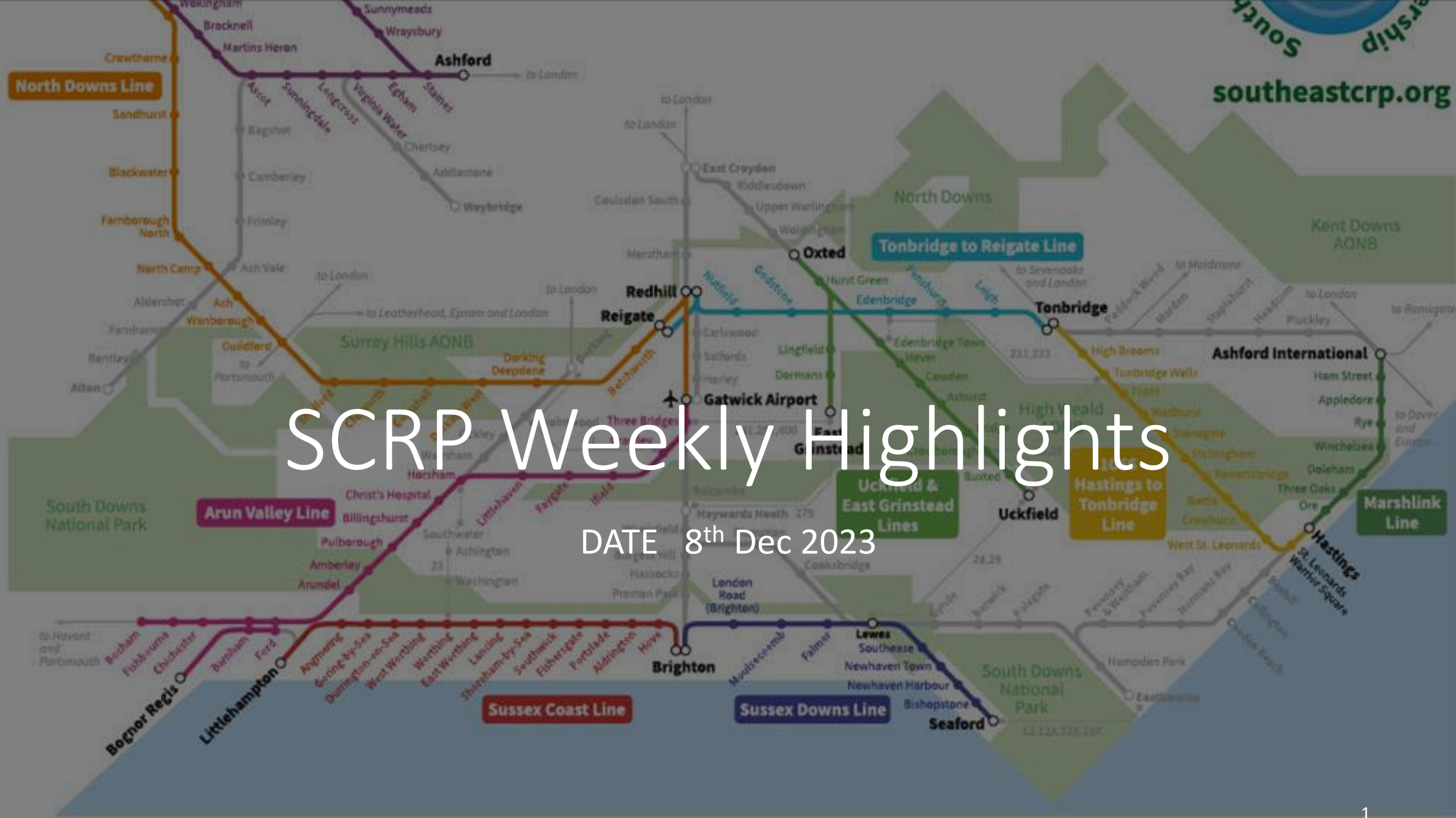


SCRCP Weekly Highlights

DATE 8th Dec 2023



southeastcrp.org



Sussex Downs Line
Seaford to Brighton
Paul Bromley Line Officer
paul@southeastcrp.org

- Trip to central London with the Friends of Bishopstone Station and GTR for the National Railway Heritage Awards.
- Bishopstone Station was Highly Commended in the Community Award category – [news story](#).
- Nice to see Lewes station gardeners highlighted in CRN's post on International Volunteers Day.

National Railway Heritage Awards



The Avanti West Coast Community Award
Highly Commended Certificate
presented to
Govia Thameslink Railway
for
Bishopstone Station Community Hub
on 6 December 2023



For #TakeALookTuesday, we want to celebrate #InternationalVolunteerDay 🙌

Did you know that there are over 1.2k station adoption groups nationwide?

Made up entirely of volunteers, these groups add value to their communities by helping make stations welcoming, vibrant and safe ❤️

We are so proud of and thankful to the wonderful #Volunteers across #CommunityRail who dedicate their time to improving stations and placing them at the heart of community life 🙏

What's your favourite part about being a volunteer? 💬

h Year

Giving

470,000
Hours

Worth
£39.9

Volunteers



Marketing and Communications
Paul Bromley Comms Officer
paul@southeastcrp.org



Very useful and productive meeting with GTR's social content manager and other CRPs to discuss current and future partnerships and promotions. Information passed on to other GTR Line Officers.

1066 Line: Hastings to Tonbridge
Andy Pope, Line Officer
andy@southeastcrp.org

This week I have run two try a train sessions with Aspens they provide high quality care and support to individuals on the autism spectrum, we travelled from around the South end of the line and over to Eastbourne.

I also joined the Culture Shift Team at Bexhill Museum to discuss the Time Travel partnership.



Arun Valley Line: Gatwick Airport to Bosham

Rowena Tyler, Line Officer
rowena@southeastcrp.org

Site Meeting with Greening Arundel volunteers, Arundel Town Council, Network Rail and SM, plenty planned for next year, including an event for Community Rail Week.

Submitted funding application to Horsham District Council to part-fund Window Seater app.

Christmas cheer is coming to the stations, thanks to station staff and volunteers.



Hounslow to Richmond
 Michael Olden Line Officer
michael@southeastcrp.org

- This week I gave a presentation at the Feltham History Groups monthly meeting on the CRP and took feedback on a first draft of the Feltham Stations 175th anniversary timeline. The group are enthusiastic and offered a lot of information which I've been sifting through with the illustrator, Claire Munday.

Feltham Station

1065
Doomsday Book lists Feltham as a hamlet in the parishes of Feltham, Twickenham and Feltham. It was a hamlet in the parishes of Feltham and Twickenham in the 11th century.

1285
Feltham was an urban district in the former county of Middlesex. It was abolished in 1965. Feltham now is a part of Greater London.

1820
Francis Marie Kelly
Feltham was an urban district in the former county of Middlesex. It was abolished in 1965. Feltham now is a part of Greater London.

1932
Zappan
Feltham was an urban district in the former county of Middlesex. It was abolished in 1965. Feltham now is a part of Greater London.

1940
Women's Land Army
Feltham was an urban district in the former county of Middlesex. It was abolished in 1965. Feltham now is a part of Greater London.

1948
Aston Martin Factory
Feltham was an urban district in the former county of Middlesex. It was abolished in 1965. Feltham now is a part of Greater London.

175th Anniversary

Timeline

1846
Steam train
Feltham was an urban district in the former county of Middlesex. It was abolished in 1965. Feltham now is a part of Greater London.

1866
St Catherine's Church
Feltham was an urban district in the former county of Middlesex. It was abolished in 1965. Feltham now is a part of Greater London.

1895
Gosceberg pickers
Feltham was an urban district in the former county of Middlesex. It was abolished in 1965. Feltham now is a part of Greater London.

1900
A.W. Smith and employees
Feltham was an urban district in the former county of Middlesex. It was abolished in 1965. Feltham now is a part of Greater London.

1914
Archibald Montgomery Low inventor
Feltham was an urban district in the former county of Middlesex. It was abolished in 1965. Feltham now is a part of Greater London.

1920
Feltham Train Station staff
Feltham was an urban district in the former county of Middlesex. It was abolished in 1965. Feltham now is a part of Greater London.

1922
War Memorial
Feltham was an urban district in the former county of Middlesex. It was abolished in 1965. Feltham now is a part of Greater London.

1924
Feltham rail workers take a break for a photograph
Feltham was an urban district in the former county of Middlesex. It was abolished in 1965. Feltham now is a part of Greater London.

1925
Chief Mechanical Engineers Inspection Station
Feltham was an urban district in the former county of Middlesex. It was abolished in 1965. Feltham now is a part of Greater London.

1926
Last Steam train to run through Feltham
Feltham was an urban district in the former county of Middlesex. It was abolished in 1965. Feltham now is a part of Greater London.

1931
At class 'D' diesel trolleybus No 1
Feltham was an urban district in the former county of Middlesex. It was abolished in 1965. Feltham now is a part of Greater London.

1936
Pyrene Fire Truck
Feltham was an urban district in the former county of Middlesex. It was abolished in 1965. Feltham now is a part of Greater London.


1940
Freddie Mercury
Feltham was an urban district in the former county of Middlesex. It was abolished in 1965. Feltham now is a part of Greater London.

1966
Intersex-inclusive Pride train
Feltham was an urban district in the former county of Middlesex. It was abolished in 1965. Feltham now is a part of Greater London.


What did you spot?

1. A question related to something on the timeline board. What date or what was the name of something.
2. A question related to something on the timeline board. What date or what was the name of something.
3. A question related to something on the timeline board. What date or what was the name of something.
4. A question related to something on the timeline board. What date or what was the name of something.
5. A question related to something on the timeline board. What date or what was the name of something.
6. A question related to something on the timeline board. What date or what was the name of something.
7. A question related to something on the timeline board. What date or what was the name of something.
8. A question related to something on the timeline board. What date or what was the name of something.


Can you find...



An old fire engine



People picking fruit



3 swans

Marshlink Line Hastings - Ashford International
Sara Grisewood, Line Officer
sara@southeastcrp.org



Plenty of online meetings for most of this week to avoid the weather and rail strikes; a very good update with Matt at SER in preparation for meeting with Catherine Bell from Hastings College next week to discuss the vinyl project for large glass windows by the gate line at Hastings Station.

I talked to Rob at GTR to discuss a funding application for Friends of Ore Station Community garden and to Suzanne Horgan to work on the application.

The weather was excellent on Saturday for Christmas in Rye. I had a stunning journey on the train from Lewes, beautifully cold and frosty but dry and sunny!

Cheerful elves staying warm, waiting for Santa to arrive by train at Rye Station for the Christmas in Rye Festival. Photo SCRP. @christmasinrye.

Sussex Coast Line Hove to Littlehampton

Rowena Tyler Line Officer
rowena@southeastcrp.org

So much can be achieved by working together:

- A London-based Community artist is keen to work with the 3 Worthing station partner groups to engage in a joint artwork project for the station. Lots of enthusiasm, - hoping funding will follow.
- Similarly, a wish for water refill facilities at stations on this line is being led by steering group members, working together to submit a bid to GTR.

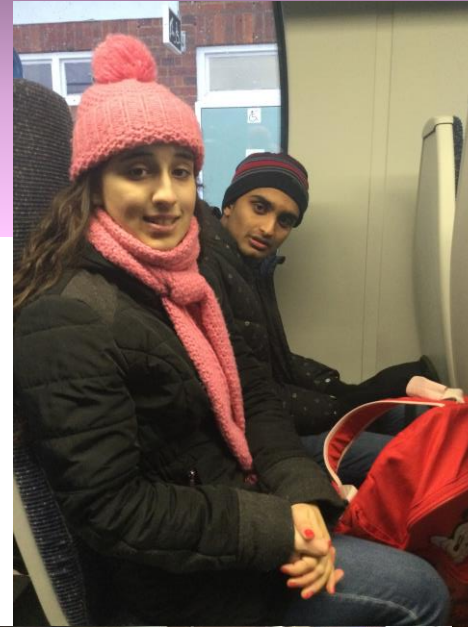


It's beginning to look a lot like Christmas.....Here's Angmering station's display, masterminded by the Friends of Angmering Station and Georgian Gardens school



Go Learn Education Cath Reed Education Officer cathreed@southeastcrp.org

- This week I have worked with Manor Green College in Crawley a Special school for pupils aged between 16 and 19.
- I ran workshops for three classes followed by a Try a Train between Ifield and Horsham.
- Rob from Horsham station was on hand to show the students how a train dispatcher does his job and we discussed how to travel safely as well as using the help point and ticket machines.
- The teacher of one group commented that this “covers all areas of how to be prepared for travel” that the students have “taken in information in real life with opportunities to use the help button etc”.
- I was also able to use my newly acquired sign language skills when I introduced myself to the class!

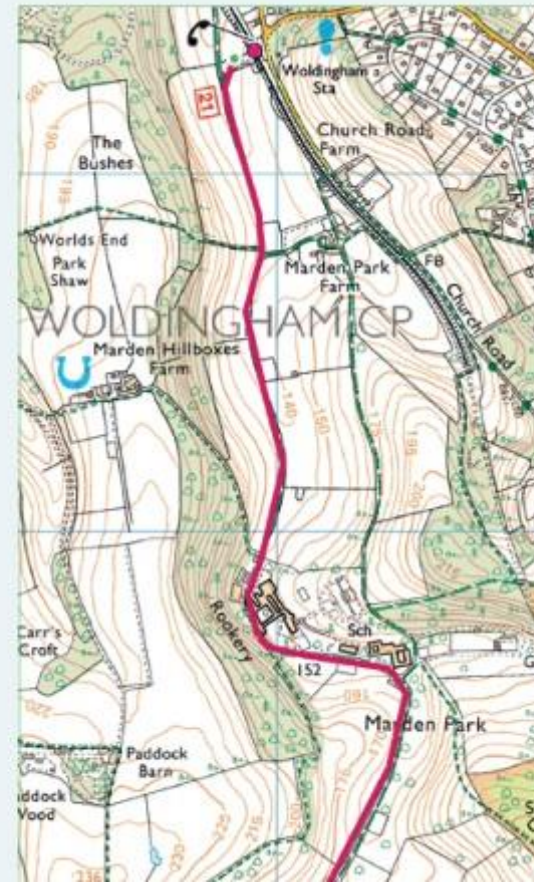


Uckfield - East Grinstead -
Oxted
Sharon Gray Line Officer
sharon@southeastcrp.org

- Very positive meeting with GTR re-establishing promotion of the North Downs Way on the Network. Now just have to make the project work with approval of both parties.
- The re-designed and fully approved CTLA poster designs have arrived just in time for printing, display and e-share at Uckfield and Buxted Christmas coffee morning next week. Already had feedback from Buxted Parish Clerk *'this is brilliant – thank you'*.
- NR have agreed to meet with Cowden resident re on-going parking issue. We still await approval for new platform planters for new station partner.



Photo: Godstone Vineyard

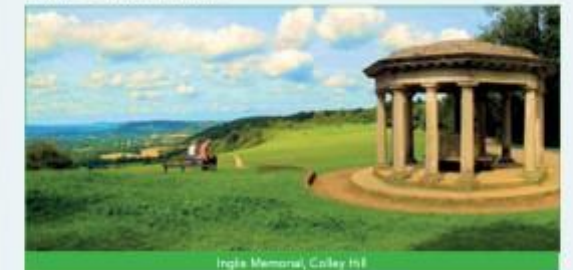


WOLDINGHAM

The North Downs Way is a designated National Trail passing through 153 miles of protected countryside between Farnham via the Surrey Hills Area of Outstanding National Beauty (AONB) and Kent Downs Area of Outstanding National Beauty (AONB) to Dover on the Kent coast.

How to get to the trail: (2 miles)

Take the footbridge to the opposite side of the tracks from the main car park and exit, when you hit the trail follow the trail signs and acorn logo. Pick up bridleway and cycle route 21 to the rear of the station. Follow the track past Marden Park Farm and Woldingham School. Pick up the North Downs Way at the Nature Reserve on Winders Hill.



Nearby stations:

West: Caterham (5 miles), Merstham (7.5 miles), Redhill (9 miles), Reigate (13 miles), East: Oxted (6 miles)

What to do and see:

West:

- Godstone Vineyards
- Caterham View Point
- Gatton Park
- Reigate Hill and Fort
- Colley Hill

North Downs Line Officer Gatwick- Redhill- Reading
Sara Grisewood
sara@southeast.crp.org

- Some cancelled plans this week because of the weather so lots of online meetings and catching up instead. In better weather last week, I met David Rose at the Guildford Volunteer Centre to talk about walks around Guildford, how to encourage train use; and help with recruiting new volunteers for Shalford Station.
- At Chilworth I met Patricia Allen, smiling in the photo, who does so much to look after the Station there; she kindly showed me the way to the Gunpowder Mills and we discussed all things signage over a cup of tea.
- Sadly I will miss the event of the year at Farnborough North Station this week, *The Great Mince Pie* giveaway starting at 7am on Friday, organised by Mike Knott. Photo next week I hope.



Ton- Reigate Line
Sharon Gray Line Officer
sharon@southeastcrp.org

- Reigate & Banstead BC/Sustrans bike repurposing scheme ready to start with Southern's assistance. Storage space was an issue due to problem now solved published on our website earlier (clue in photo).
- Students' photography project ready for installation at Redhill.
- North Downs Way access promotion at stations on this line will also be re-established.

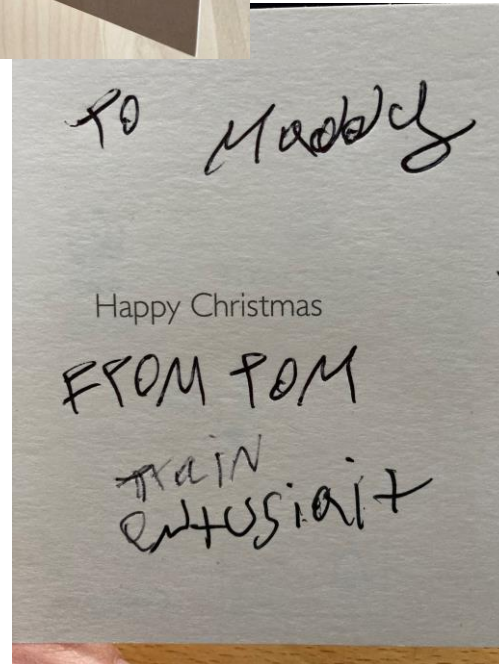
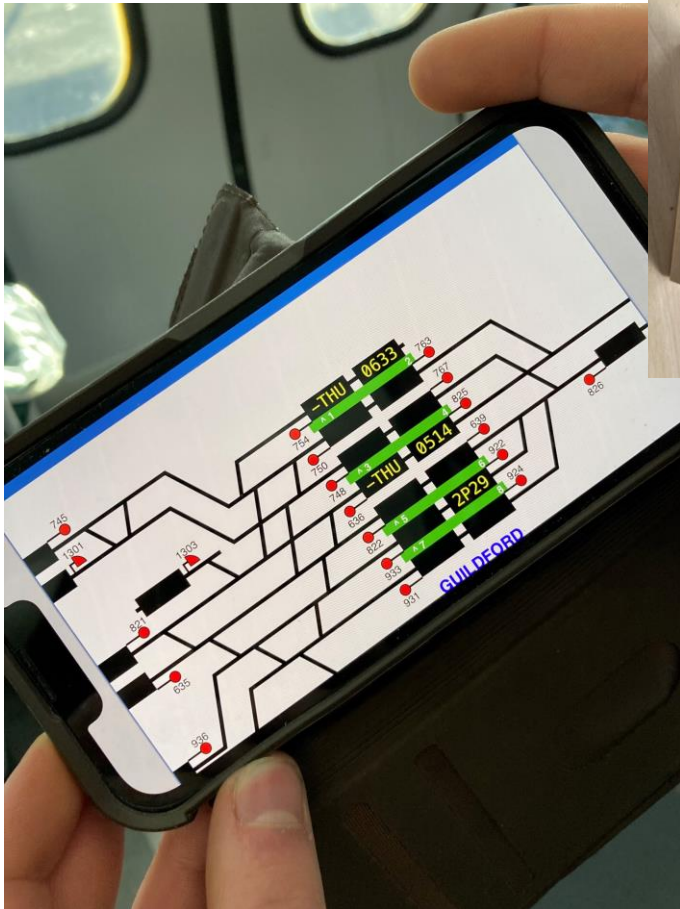


Windsor to Reading Line
Sandy Mahon, Line
Officer
sandy@southeastcrp.org

- It's beginning to look a lot like Christmas...
- Liaising this week with stations along the line to see what fun and creative plans the amazing South Western Railway staff have to decorate and bring lots of festive cheers to passengers in the weeks leading up to the holiday season.
- Pictured is Datchet station where SWR team member Aggie has once again worked her magic and decorated the ticket office with recycled ticket vending machine roll!



Go Train GWR Education
Maddy Mills Education Officer
maddy@southeastcrp.org



- Try A Train workshop at Gosden House School, Shalford. 15 x young people.
- Try a Train workshop and train trip at Newbury College. Workshop for 8 x young people and train trip from Newbury to Reading for 4 x young people. Taking out 4 other students next week...
- Try a Train trip for HALOW at Guildford. Travelled from Guildford to Redhill with 10 x young people. Tom (young person) gave me a Christmas card and a lesson on how to use the traintimes.com website – see photos!
- ‘Planning Your Journey & Staying Safe’ workshops at Nine Mile Ride school, Wokingham. 60 x Year 6 pupils
- Trip to Postal Museum (and train ide!) with Cath – will post photos next week.



SCRP CIC News Fiona Morton CEO & Trevor Field Finance Officer

This week has been mainly about preparing for our Board Meeting on Monday.

Will be attending GTR drop-in on Friday

Notified our two applications to Integrated Sustainable Transport Fund were successful. Bike marking & Try a Train and a Reading with Optalis and Reading Buses

Next week we will be submitting bids to CCIF funds

