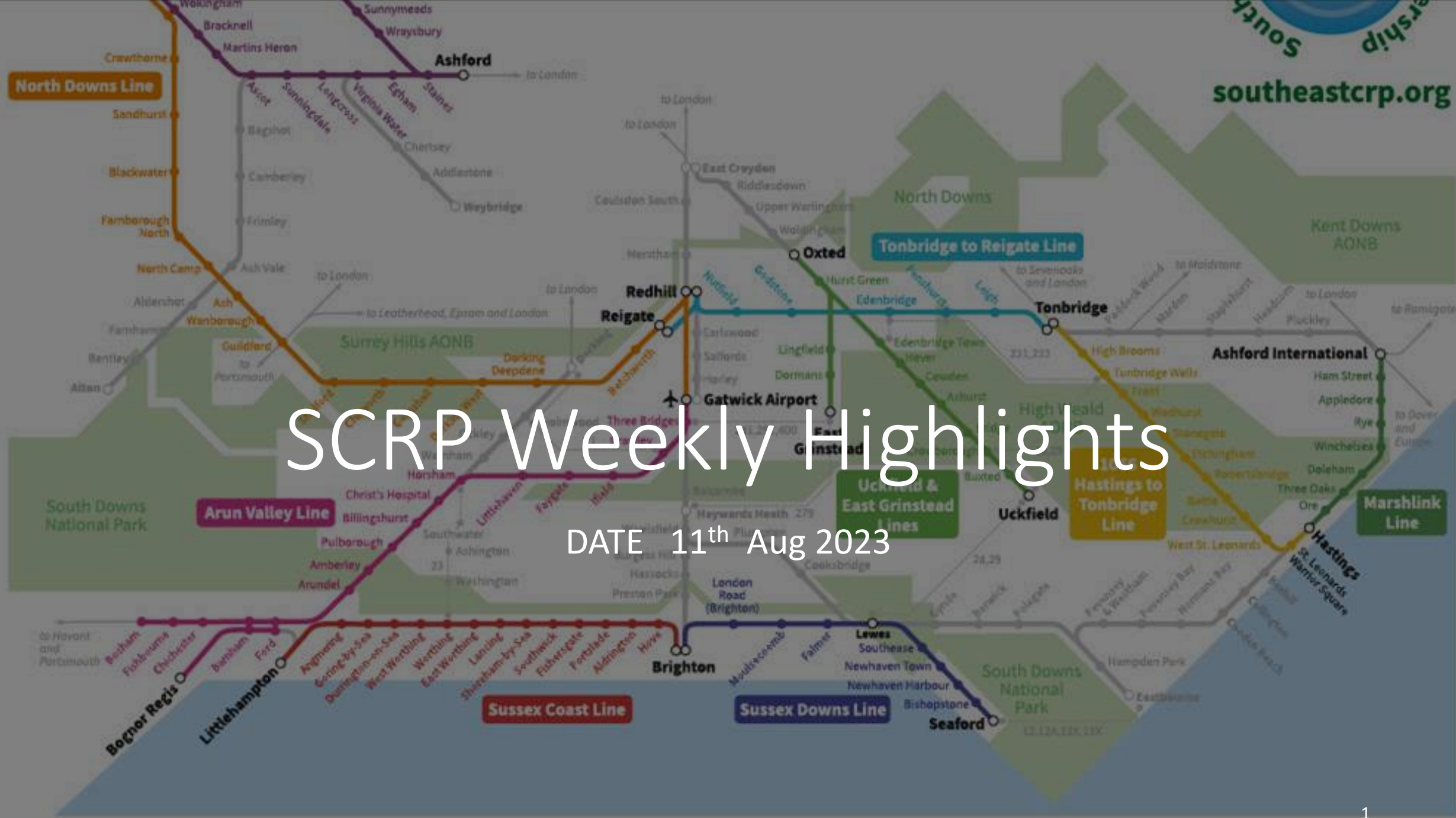


SCRCP Weekly Highlights

DATE 11th Aug 2023



Marketing and Communications Paul Bromley Comms Officer paul@southeastcrp.org



Initial preparation for staff press release training session



Promotion of Artwave Festival including art displays at railway stations – [website story](#) and posters at station



Marshlink Hastings- Ashford International Sara Grisewood Line Officer sara@southeastcrp.org

- Visited Ore Station to complete Station Access Permits for new community gardening projects
- Planned a Garden Day in September to promote the projects at Ore, including talks and family workshops.
- Met with Friends of Hastings Station Group to start funding application to Sussex Community Fund.



Customer at Rye Station admiring the new Lost Words poster series. Poetry and images by local artists and writers.



Trevor Davies and the new poster at Ore Station

1066 Line: Hastings to Tonbridge
Andy Pope, Line Officer
andy@southeastcrp.org

Top, the launch of the new Sussex Outreach service at Etchingam station. Dr Sarah Jacques talks to assembled villagers about the proposed Health services and Citizen advice to be offered from the Station building and future expansion.

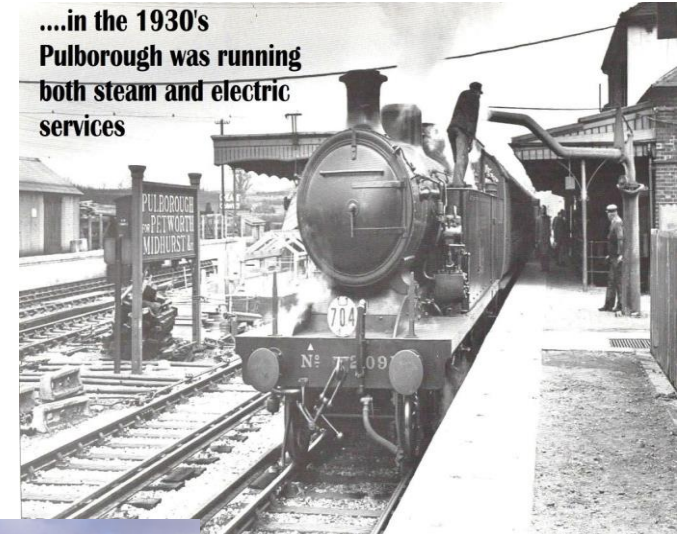
Bottom, Hastings bike project took delivery of their first batch of abandoned bikes from Tunbridge wells station. These will be repurposed and donated to the needy in Hastings and St Leonards.



Arun Valley Line: Gatwick Airport to Bosham

Rowena Tyler, Line Officer
rowena@southeastcrp.org

- Planning Pulborough station involvement in Heritage Open Weekend next month. Eleven sites across Pulborough will be open to visit, including guided tours at the station and free trips on classic buses. <https://www.heritageopendays.org.uk/> PUT PULBOROUGH IN THE SEARCH BOX
- Agreeing Three Bridges and Horsham artwork projects completion dates and final payments from grant funding
- Gatwick phased projects, discussions with GTR marketing
- Planning agenda for joint AGM, Arun Valley Line volunteer presentation confirmed.



Sussex Coast Line Hove to Littlehampton
Rowena Tyler Line Officer
rowena@southeastcrp.org

- Supporting partners with their projects:
 - Steyning CP Downlink, The Lost Railways;
 - Southwick Community Garden;
 - Shoreham-by-sea noticeboard;
- Planning agenda for joint AGM, Sussex Coast Line volunteer presentation confirmed.



Sussex Downs Line Seaford to Brighton

Paul Bromley Line Officer

paul@southeastcrp.org



A chance conversation with a woman waiting for travel advice at Seaford ticket office led to SCRCP arranging for the man who painted the Seven Sisters artwork at the station as a 17-year-old school pupil returning to the station 26 years later to talk about how it came to be there.

News story on [SCRP website](#), [social media](#) and on [Sussex World](#).

Response: "Great articles! It was a fun experience to tell someone about the painting!"



Seaford station artist revisits scene of teenage triumph

The artist whose painting has been on display in the ticket office at Seaford railway station for the last 26 years has returned to reminisce about his artwork.

Henry Robertson-Nicol visited [Seaford](#) station to talk about his painting at the invitation of [Southeast Communities Rail Partnership](#) after [Sussex Downs Line](#) Officer Paul Bromley fell into conversation with his sister at the ticket office.

She was taking photos of the artwork on her phone to put on her family's WhatsApp group and mentioned her brother had painted the image.



Henry Robertson-Nicol holds the 1997 photo of him with his Seven Sisters painting on the wall behind

Henry was a 17-year-old pupil at Newlands Manor boarding school (now closed) studying A-level Art when there was an initiative for school pupils in the area to help brighten up railway stations.

Uckfield - East Grinstead - Oxted
Sharon Gray Line Officer
sharon@southeastcrp.org

- Visited Buxted met with local resident who has shared some vintage photos for the photo wall.
- Arranging annual joint lines meeting, community input/catering etc
- Spa Valley had a very busy day at Eridge station with arrival of a coach trip.



Ton- Reigate Line
Sharon Gray Line Officer
sharon@southeastcrp.org

- Started working on arrangements for the annual joint lines meeting; catering and community in-put etc.
- The Oaks college have started phase two of their gardening project at Tonbridge station.



Windsor to Reading Line
Sandy Mahon, Line Officer
sandy@southeastcrp.org



Southeast Communities Rail Partnership, Wokingham Borough Council, Winnersh Triangle Business Park and Love to Ride, teamed up on Friday 4th August for a Green Travel Event and all for free!

The day started at Winnersh Triangle Business Park with visitors being treated to a healthy buffet breakfast while Dr. Bike got to work repairing bicycles. There was a stretch and cool down session in The Cabin, the onsite wellness space for those that had cycled to work. The Thames Valley Police carried out bike security marking and in the afternoon, we held bike surgeries and maintenance workshops.

The My Journey Team had freebies to hand out and Love to Ride played 'spin the wheel' with attendees where there were lots of prizes and merchandise to be won.

Fantastic to see so many people cycling to work and keen to know more about local cycling routes in the area.

Go Learn Education
Cath Reed Education Officer
cathreed@southeastcrp.org

- General Admin, catching up with emails and sorting out details for the Junior Citizen event to be held at the Hawth in Crawley in September
- Preparing resources for the next term , updating and renewing some of the workshop packs ready for September.



Go Train GWR Education
Maddy Mills Education Officer
maddy@southeastcrp.org



- Try A Train workshop on Monday for County Care in Fetcham with 6 people. Took them out on the train on Thursday to West Central Café in Redhill.
- Started work on new T & Cs for school and community group bookings.
- Created an info graphic for this academic year showing stats for both Go Learn and Go Train.

Go Train GWR Education

Sharon Hunt Education Officer
sharonh@southeastcrp.org

- Admin tasks and end of academic year tidy up!
- North Downs Line handover meeting with David and Sara.
- Out on Sussex Coast Line with stops at Brighton, Lewes and Bishopstone with Paul - to experience a day in the life of a line officer!
- We visited the lovely people at Paul's Brighton station partner – The Brighton Toy Museum, where we had time for a quick look around and I got to sit in a very comfortable Pullman train chair! We then travelled to Lewes and met with Dr Wendy Maples, the Lewes Town Councillor. Finally, I was able to look around and hear about the wonderful things going on at the Parcel Room-Community Hub at Bishopstone station.



SCRP CIC News

August holiday season is upon us however lots to catch-up on including,

- Reworking 2023-2024 budgets.
- Preparation of draft statutory returns including CIC 34 annual returns for submission with the annual accounts.
- Grant funding follow up for SCRП projects.
- Finally, Hastings & Marshlink images kindly supplied by Kevin Boorman at SCRП, which were destined for another publication but alas just missed the deadline.

