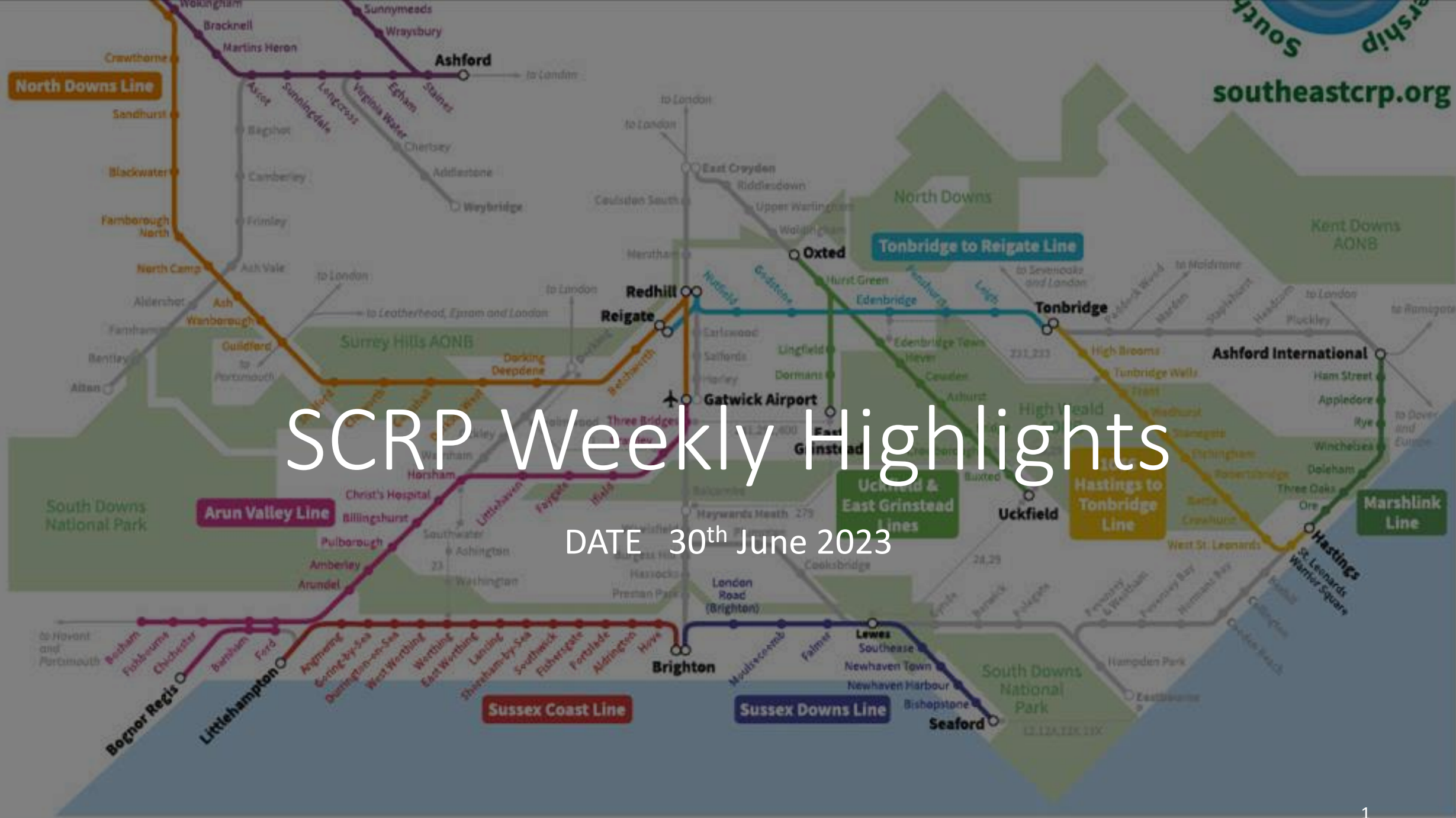


SCRCP Weekly Highlights

DATE 30th June 2023





Norman has arrived at lovely Lewes Station, bang on time! @SoutheastCRP
#BetterByTrain



Time to take in the wonderful gardens here in Lewes

SCRP CIC News

We have been following the adventures of our Chair of Sussex Downs Line, Norman Baker, as he travelled from Newhaven to Thurso. 16+ hours, 7 trains, and 600 miles - stunning scenery and time to work and relax - travel really is [#BetterByTrain!](#)

GTR held an environmental conference in Luton, great to hear of projects coming our way for Shoreham by Sea and Three Bridges.

We continue to press for fair funding from the DfT for Community Rail

1066 Line: Hastings to Tonbridge
Andy Pope, Line Officer
andy@southeastcrp.org

New Plants
donated by
staff and
**volunteers at
Etchingham**



Try a train trip
with Hazel court
SEN school with
Kate Richards
and Paul Bromley
from Eastbourne
to Bexhill return.
Wonderful
Sensory
experience with
four pupils from
the School.





Rowena

The Mayor of Arundel and the Town Council request the pleasure of your company for celebratory drinks to show their appreciation of your work in the community.

The winner of the 2022

Arundel Community Award and the Young Person's Community Commendation Award

will be announced at Arundel Town Hall, Maltravers Street, BN18 9AP on Thursday 1st December from 6.30pm to 8.00pm

Arun Valley Line: Gatwick Airport to Bosham
Rowena Tyler, Line Officer
rowena@southeastcrp.org

Rowena is on annual leave this week. Rowena receives a lot of recognition for her work with the steering group. A few highlights pictured.



Marshlink Hastings- Ashford
International
Sara Grisewood Line Officer
sara@southeastcrp.org

- I met up with Harry Stevenson from Network Rail at Ore Station this week to discuss plans to create a community garden by the Station. We also looked at issues of access, lighting and the state of the Broomgrove Overbridge.
- I attended the GTR Environmental Forum highlighting their initiatives across the regions and caring for wildlife by railway lines.



Sara with Jason Brooker GTR

North Downs Line Officer Gatwick- Redhill- Reading
David Daniels
david@southeastcrp.org

David has returned temporarily to help us out on North Downs

He is helping us get ready for the AGM on 25th July

Pictured are some of Davi's highlights from his work on NDL



Sussex Coast Line Hove to
Littlehampton

Rowena Tyler Line Officer

rowena@southeastcrp.org

- Rowena is having a well-deserved break this week. On her return will hear more about some projects announced by GTR Environment Team. Pictured is a note left by an appreciative passenger for the gardeners at Lancing

Hello Gardening Lady.
Thank you so much for making
the little garden look so pretty.
I expect you planted the
cyclamen by the bay tree,
they are lovely.

Best wishes from
a passer-by.



Sussex Downs Line Seaford to Brighton

Paul Bromley Line Officer

paul@southeastcrp.org

- Attended launch event for Brighton & Hove Walking Festival and promoted Scenic Rail Britain/Days Out by Rail
- Picked up artwork from youth group to be placed above ticket office window at Newhaven Town station



Ton- Reigate Line
Sharon Gray Line Officer
sharon@southeastcrp.org

- Leigh primary school train trip and safety talk to/from Leigh to Tonbridge with Maddy. 29 children.
- Reigate station event to celebrate latest community engagement at the station – student photographic artwork display and two new SP's working with the platform planters.
- Redhill – new art project and planting in planning



Uckfield - East Grinstead -
Oxted
Sharon Gray Line Officer
sharon@southeastcrp.org

- Crowborough Arts posters showing signs of age arranging to have all the artwork replaced and reprinted.
- Prep for Edenbridge primary school train trips.
- Wildflower cultivation for Autumn projects with Surrey Choices.





Windsor to Reading Line
Sandy Mahon, Line Officer
sandy@southeastcrp.org

A very productive meeting with artist Jenna Fox this week.

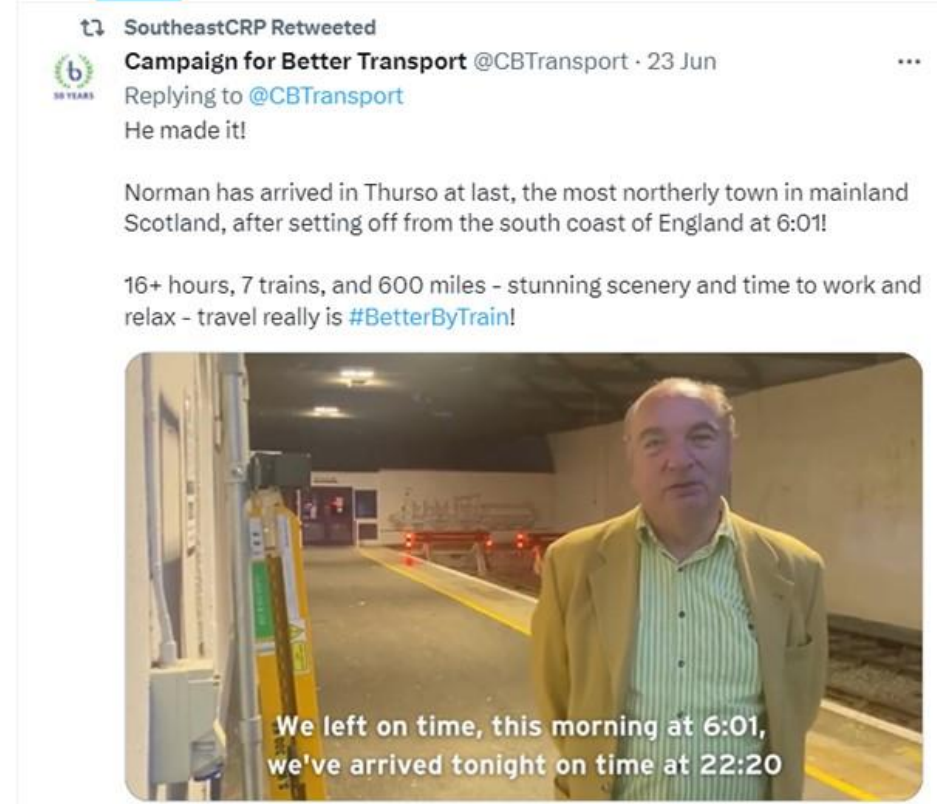
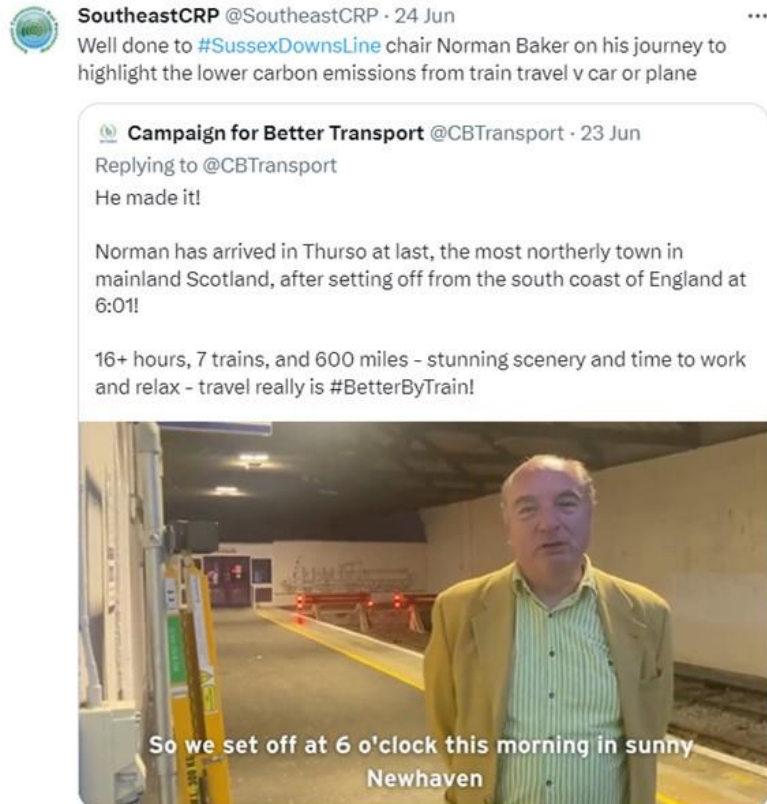
She was instrumental in the Brunel Arcade vinyls project and is now working on a six-piece panel for the upper floor at Reading Station. Entitled 'The Ballad of Reading', it is a site-specific work combining painting, collage and drawing that illustrates the diverse and varied history of Reading.

Piece should be completed by mid-July. Will be sure to keep you posted of the unveiling date!

Marketing and Communications

Paul Bromley Comms Officer
paul@southeastcrp.org

- Publicised trip by Sussex Downs Line chair Norman Baker in his capacity as director of external affairs for Campaign for Better Transport from south coast of England to north coast of Scotland in one day by train – 600 miles on seven trains.



Go Learn GTR Education
Cath Reed - Education Officer
cathreed@southeastcrp.org

The feedback from pupils and teachers is often entertaining and so appreciated.

Great example (right) of some thanks via Twitter.

Happy faces all round.

Thank you to Cath from Go Learn and the amazing staff at Horsham Railway Station. It was a fantastic visit and our staff and pupils learnt so much! @SouthernRailUK @SoutheastCRP @LGPSchool #IfieldtoHorsham #tootoot 🥰 !



Go Train GWR Education
Maddy Mills - Education Officer
maddy@southeastcrp.org



- Working with Sharon Gray to deliver school visit to Tonbridge for 30 x pupils from Leigh Primary School.
- Try a Train trip for Hazel Court School, Eastbourne. 9 x students with SEND. Had ice creams on the seafront at Hastings – see photo!
- Try a Train workshop at Chiltern Way Academy, Wokingham. 7 x Year 9 pupils. Assisted by Sharon Hunt.
- Delivering ‘Sustainable and Healthy Travel’ workshop and ‘Staying Safe’ workshop at West Green Primary School, Crawley. 30 x Year 6 pupils.
- Meeting with ‘Providing Support for Children with Downs Syndrome’ charity to talk about Try a Train. Contact given to me by Caroline before she left.